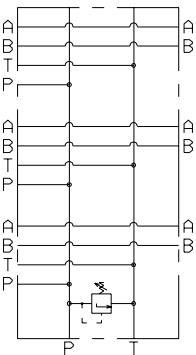


BM.5.**...

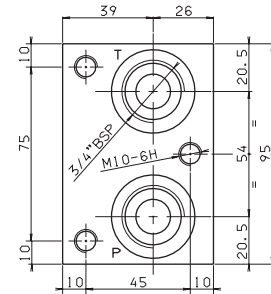
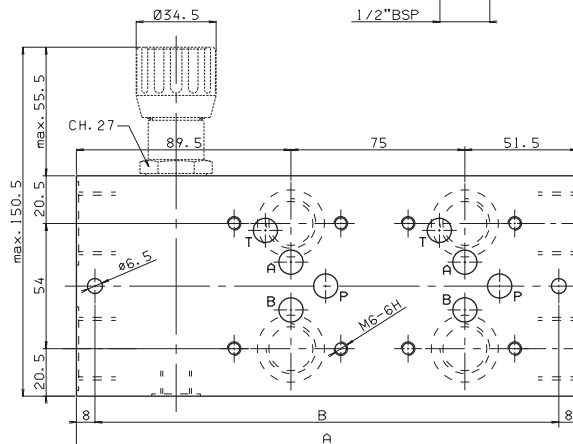
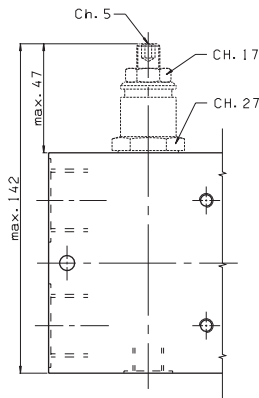
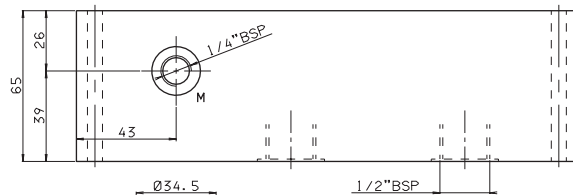
- BM** Multi station subplate
- 5** CETOP 5/NG10
- ****
 - 50** = Connected in parallel with pressure relief valve and rear connectors
 - 60** = Connected in parallel without pressure relief valve and side connectors
 - 70** = Connected in parallel with pressure relief valve and 3/4" BSP P/T connectors and 1/2" BSP side A/B
 - 80** = Connected in parallel with pressure relief valve and 1" BSP P/T connectors and 3/4" BSP side A/B
- *** No. of valves seats (for BM.5.80... max 6)
2 / 3 / 4 / 5 / 6 / 7 / 8
- *** Type of adjustment (omit for 60 version)
M = Plastic knob
C = Grub screw
- *** Setting range (omit for 60 version)
1 = max. 50 bar (**white spring**)
2 = max. 140 bar (**yellow spring**)
3 = max. 350 bar (**green spring**)
- 00** No variant
- 1** Serial No.

• The minimum permissible setting pressure is the same for all spring: see cartridge valve type CMP.30...

BM.5.50 CONNECTED IN PARALLEL WITH PRESSURE RELIEF VALVE



Type	A	B	Weight (Kg)
BM.5.50/2	216	200	8,5
BM.5.50/3	291	275	11,3
BM.5.50/4	366	350	14
BM.5.50/5	441	425	16,8
BM.5.50/6	516	500	19,5
BM.5.50/7	591	575	22,3
BM.5.50/8	666	650	25



Fixing screws M6x75 UNI 5931

7

BM.5.60 CONNECTED IN PARALLEL WITHOUT PRESSURE RELIEF VALVE

Type	A	B	Weight (Kg)
BM.5.60/2	175	159	10
BM.5.60/3	250	234	14,2
BM.5.60/4	325	309	18,4
BM.5.60/5	400	384	22,6
BM.5.60/6	475	459	26,8
BM.5.60/7	550	534	31
BM.5.60/8	625	609	35,2

Fixing screws M6x100 UNI 5931

BM.5.70 CONNECTED IN PARALLEL WITH PRESSURE RELIEF VALVE

Type	A	B	Weight (Kg)
BM.5.70/2	216	200	12,7
BM.5.70/3	291	275	16,8
BM.5.70/4	366	350	21
BM.5.70/5	441	425	25,2
BM.5.70/6	516	500	29,5
BM.5.70/7	591	575	33,6
BM.5.70/8	666	650	37,8

Fixing screws M6x100 UNI 5931

BM.5.80 CONNECTED IN PARALLEL WITH PRESSURE RELIEF VALVE

Type	A	B	Weight (Kg)
BM.5.80/2	225	205	19,5
BM.5.80/3	300	280	26
BM.5.80/4	375	355	32,5
BM.5.80/5	450	430	39
BM.5.80/6	525	505	45,5

Fixing screws M8x110 UNI 5931

