

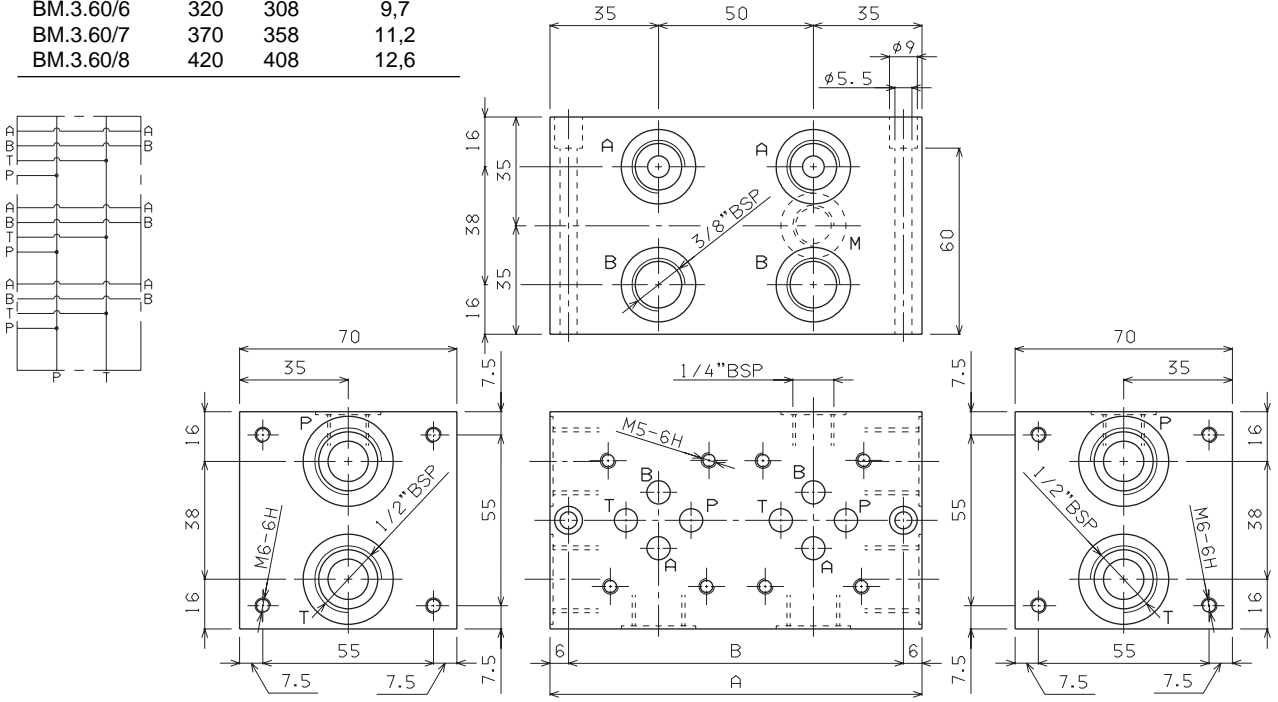
BM.3.**...

BM	Multi station subplate
3	CETOP 3/NG6
**	<p>50 = Connected in parallel with pressure relief valve and rear connectors</p> <p>70 = Connected in parallel with pressure relief valve and side connectors</p> <p>52 = Connected in series with pressure relief valve and rear connectors</p> <p>72 = Connected in series with pressure relief valve and side connectors</p> <p>60 = Connected in parallel without pressure relief valve and side connectors</p>
*	<p>No. of valve seats</p> <p>2 / 3 / 4 / 5 / 6 / 7 / 8</p>
*	<p>Type of adjustment (omit for 60 version)</p> <p>M = Plastic knob</p> <p>C = Grub screw</p>
*	<p>Setting range (omit for 60 version)</p> <p>1 = max. 50 bar (white spring)</p> <p>2 = max. 150 bar (yellow spring)</p> <p>3 = max. 320 bar (green spring)</p>
00	No variant
1	Serial No.

• The minimum permissible setting pressure depending on the spring: see cartridge valve type CMP.10...

BM.3.60 CONNECTED IN PARALLEL WITHOUT PRESSURE RELIEF VALVE

Type	A	B	Weight (Kg)
BM.3.60/2	120	108	3,6
BM.3.60/3	170	158	5,1
BM.3.60/4	220	208	6,7
BM.3.60/5	270	258	8,2
BM.3.60/6	320	308	9,7
BM.3.60/7	370	358	11,2
BM.3.60/8	420	408	12,6

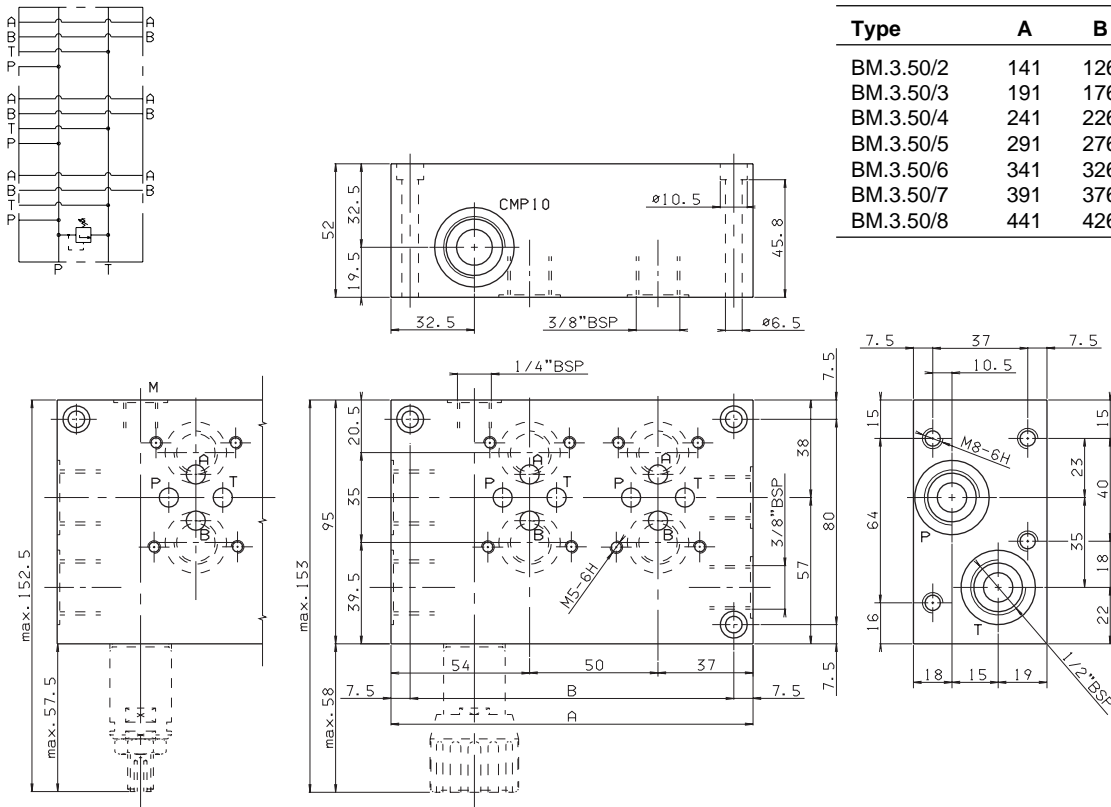


Fixing screws M5x70 UNI 5931

7

BM.3.50 CONNECTED IN PARALLEL WITH PRESSURE RELIEF VALVE

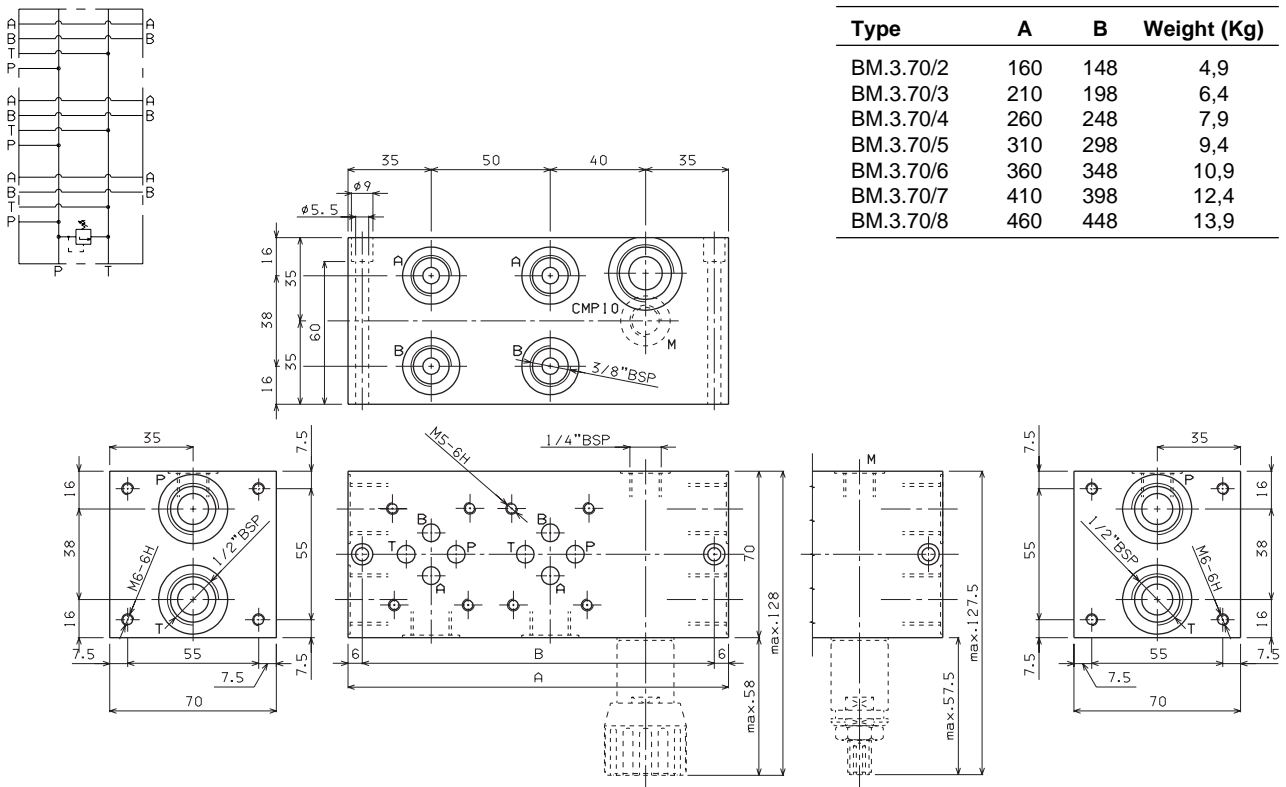
Type	A	B	Weight (Kg)
BM.3.50/2	141	126	4,6
BM.3.50/3	191	176	6,1
BM.3.50/4	241	226	7,6
BM.3.50/5	291	276	9,1
BM.3.50/6	341	326	10,6
BM.3.50/7	391	376	12,1
BM.3.50/8	441	426	13,6



Fixing screws M6x55 UNI 5931

BM.3.70 CONNECTED IN PARALLEL WITH PRESSURE RELIEF VALVE

Type	A	B	Weight (Kg)
BM.3.70/2	160	148	4,9
BM.3.70/3	210	198	6,4
BM.3.70/4	260	248	7,9
BM.3.70/5	310	298	9,4
BM.3.70/6	360	348	10,9
BM.3.70/7	410	398	12,4
BM.3.70/8	460	448	13,9



Fixing screws M5x70 UNI 5931



BM.3.52 CONNECTED IN SERIES WITH PRESSURE RELIEF VALVE

Technical drawing of the BM.3.52 subplate. It includes a top view showing a grid of ports labeled P, T, B, and M, with dimensions for overall size (max. 152.5 x max. 57.5) and port spacing. A side view shows the subplate's profile with a height of 46 and a top flange of 52. A detail view shows a CMP 10 pressure relief valve with a 3/8" BSP connection. Another detail shows an M5-6H screw hole. A final detail shows the 1/2" BSP connection for the subplate's main inlet.

Type	A	B	Weight (Kg)
BM.3.52/2	141	126	4,6
BM.3.52/3	191	176	6,3
BM.3.52/4	241	226	7,6
BM.3.52/5	291	276	9,2
BM.3.52/6	341	326	10,7
BM.3.52/7	391	376	12,2
BM.3.52/8	441	426	13,7

Fixing screws M6x55 UNI 5931

BM.3.72 CONNECTED IN SERIES WITH PRESSURE RELIEF VALVE

Technical drawing of the BM.3.72 subplate. It includes a top view showing a grid of ports labeled P, T, B, and M, with dimensions for overall size (max. 128 x max. 58) and port spacing. A side view shows the subplate's profile with a height of 70 and a top flange of 55. A detail view shows a CMP 10 pressure relief valve with a 3/8" BSP connection. Another detail shows an M5-6H screw hole. A final detail shows the 1/2" BSP connection for the subplate's main inlet.

Type	A	B	Weight (Kg)
BM.3.72/2	160	148	4,9
BM.3.72/3	210	198	6,4
BM.3.72/4	260	248	7,9
BM.3.72/5	310	298	9,4
BM.3.72/6	360	348	10,9
BM.3.72/7	410	398	12,4
BM.3.72/8	460	448	13,9

Fixing screws M5x70 UNI 5931

7