

ADL06.6... FLOW DIVERSION VALVES



ADL06.6...

D15 DC COIL	CH. I PAGE 61
STANDARD CONNECTORS	CH. I PAGE 21

The 6 way flow diversion valves are special solenoid valves which allow the simultaneous connection of two systems.

In order to obtain valve's working at pressure of 250 bar up to 320 bar (external drainage) the G 1/8" BSP plug must be removed to Y connector.

Max. pressure (without drainage, Y plugged)	250 bar
Max. pressure (external drainage)	320 bar
Max. flow	40 l/min
Overlap	negative
Fluid viscosity	10 ÷ 500 mm ² /s
Fluid temperature	-25°C ÷ 75°C
Ambient temperature	-25°C ÷ 60°C
Max. contamination level	class 10 in accordance with NAS 1638 with filter $\beta_{25} \geq 75$
Weight	2,4 Kg

ORDERING CODE

ADL06	Flow diversion valves NG6
6	No. of way
W	Threaded connectors 3/8"BSP
I	Without drainage Y connector plugged
*	Voltage (see table 1)
**	Variants (see table 2)
3	Serial No.

TAB.1 - D15 COIL

DC VOLTAGES	
L	12V
M	24V
N	48V*
P	110V*
R	98V*
S	196V*
W	Without DC coils

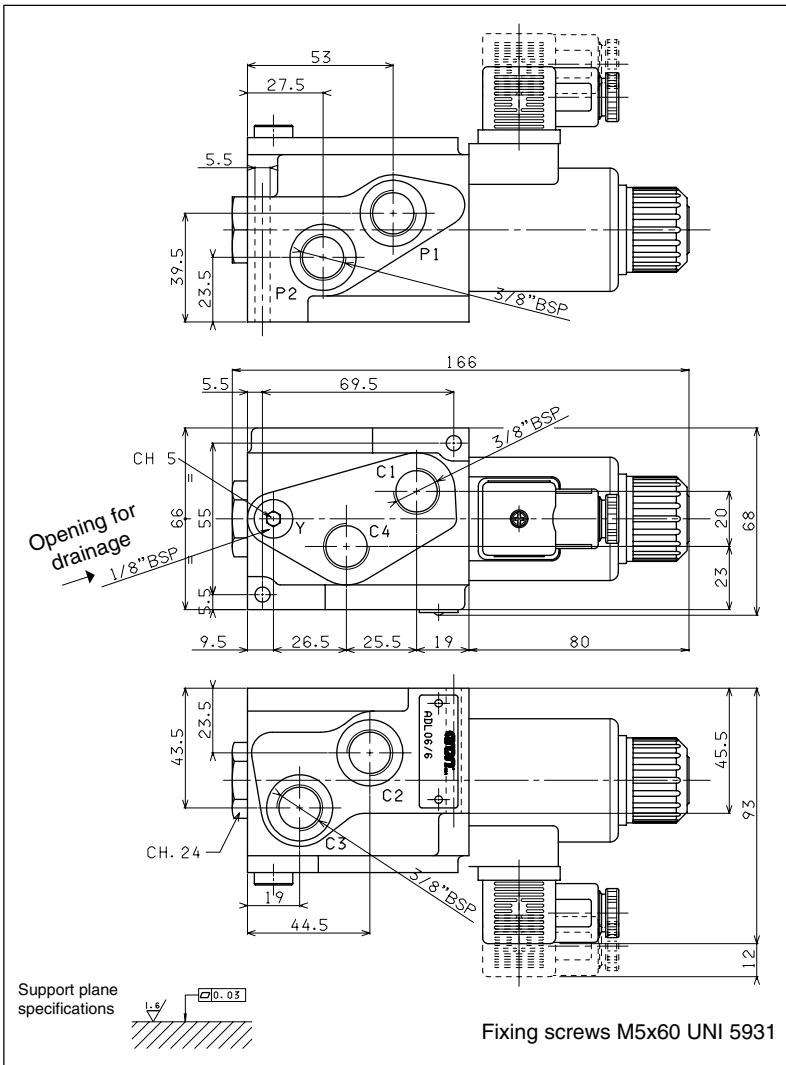
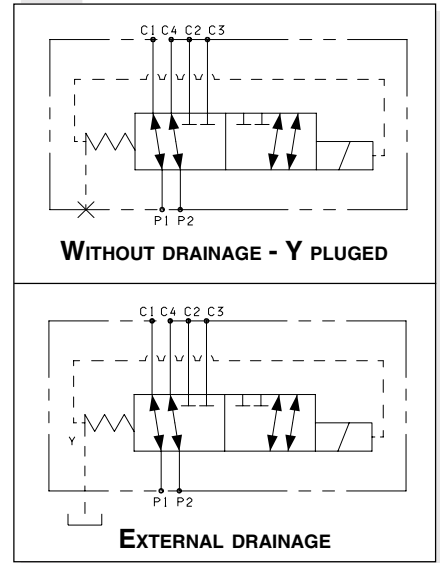
110Vac/50Hz
120Vac/60Hz
with rectifier

220Vac/50Hz
240Vac/60Hz
with rectifier

Voltage codes are not stamped on the plate, their are readable on the coils.

* Special voltages

DRAINS AND HYDRAULIC SYMBOLS



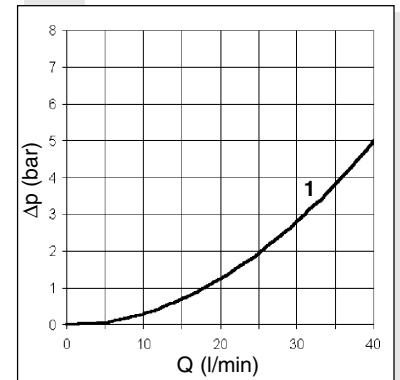
TAB.2 - VARIANTS

VARIANT	CODE
No variant (connectors as in the drawing)	00
Viton	V1
Pilot light	X1
Rectifier	R1
Flow diversion without connector (coil)	S1
Viton + Pilot light	VX
Viton + Rectifier	VR
Pilot light + Rectifier	XR
AMP Junior coil	AJ
AMP Junior coil and integrated diode	AD
Coil with flying leads (175mm)	SL

PRESSURE DROPS

Curve n° 1:

- P1 → C1
- P1 → C2
- P2 → C3
- P2 → C4



Leakages: ≤ 10 cc/min with rest carried out at a fluid temperature of 40°C with a pression at 200 bar; the fluid used was a mineral based oil with viscosity of 46 mm²/s at 40° C.