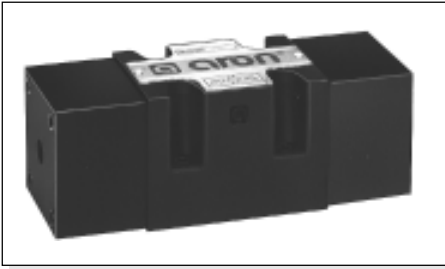


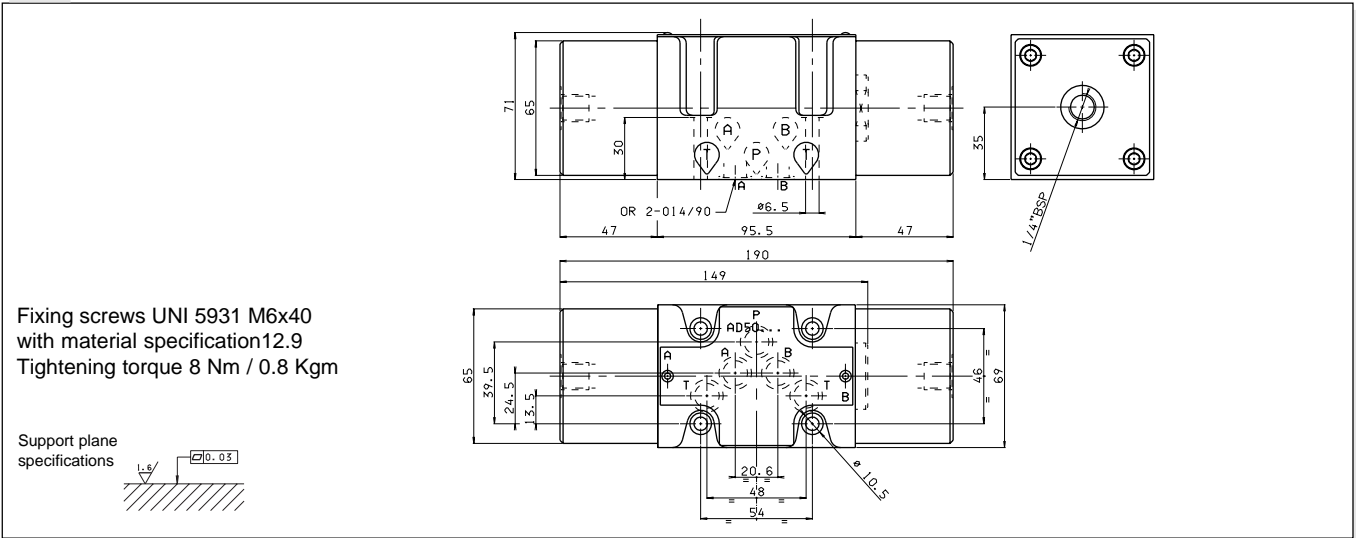
1



Max. pressure ports P/A/B	320 bar
Max. pressure port T	160 bar
Max. flow	100 l/min
Min. operating pressure*	4 bar
Max. operating pressure**	200 bar
Fluid viscosity	10 ÷ 500 mm ² /s
Fluid temperature	-25°C ÷ 75°C
Ambient temperature	-25°C ÷ 60°C
Max. contamination level	class 10 in accordance with NAS 1638 with filter β ₂₅ ≥ 75
Weight (single pilot)	4,1 Kg
Weight (twin pilot)	5,4 Kg

- Possible mounting: C / D / E / F / G / H / I / L / M
- Ordering code see page I-24
- Notes: (*) In the absence of counter-pressure at port T
- (**) Operating pressure: 4 + 0.027 pt (pressure at port T)

OVERALL DIMENSIONS



File: EAD50002

00/2000/e

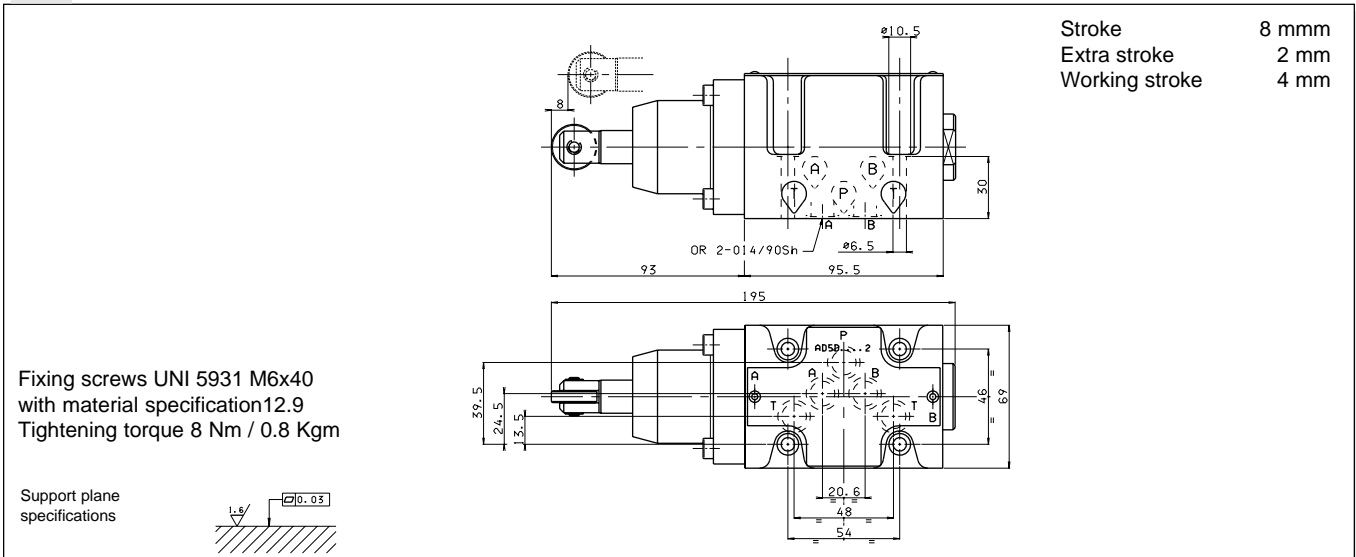
AD.5.D... DIRECT MECHANICALLY OPERATED TYPE VALVES CETOP 5/NG10



Max. pressure ports P/A/B	320 bar
Max. pressure port T	20 bar
Max. flow	100 l/min
Operating force *	8 Kg**
Fluid viscosity	10 ÷ 500 mm ² /s
Fluid temperature	-25°C ÷ 75°C
Ambient temperature	-25°C ÷ 60°C
Max. contamination level	class 10 in accordance with NAS 1638 with filter β ₂₅ ≥ 75
Weight	3,8 Kg

- Possible mounting: E / F / G / H
- Ordering code see page I-24
- Notes: (*) In the absence of counter-pressure at port T
- (**) 10 Kg with a pressure of 200 bar at T

OVERALL DIMENSIONS



File: EAD5D002

00/2000/e