

# AD.3.V... CETOP 3/NG6 WITH PROXIMITY SENSOR L.V.D.T.



1

AD.3.V...	
D15 DC COIL	CH. I PAGE 20
STANDARD CONNECTORS	CH. I PAGE 21
L.V.D.T.	CH. I PAGE 22

The single solenoid directional valves type AD.3.V are used in applications where the monitoring of the position of the spool inside the valve is requested to manage the machine safety cycles in according with the accident prevention legislation. These directional valves are equipped with an horizontal positioned inductive sensor on the opposite side of the solenoid, which is capable of providing the first movement of the valve when the passage of a minimum flow is allowed. Integrated in safety systems, these valves intercept actuator movements that could be dangerous for the operators and for the machine.

Max. operating pressure ports P/A/B	320 bar
Max. operating pressure port T dynamic (see note*)	250 bar
Max. flow	60 l/min
Max. excitation frequency	3 Hz
Duty cycle	100% ED
Fluid viscosity	10 ÷ 500 mm <sup>2</sup> /s
Fluid temperature	-25°C ÷ 75°C
Ambient temperature	-25°C ÷ 60°C
Type of protection (in relation to connector used)	IP 66
Weight	1,7 Kg

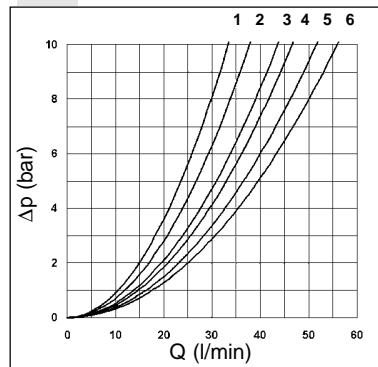
(\*) Pressure dynamic allowed for 2 millions of cycles.

- Possible mountings: E / F / H
- The valve is supplied with DC solenoid only

### ORDERING CODE

<b>AD</b>	Directional control valve
<b>3</b>	CETOP 3/NG6
<b>V</b>	Directional valve with single solenoid and L.V.D.T. proximity sensor
<b>***</b>	Spool and mounting (table 1)
<b>*</b>	Voltage (table 2)
<b>**</b>	Variants (table 3)
<b>2</b>	Serial No.

### PRESSURE DROPS



Spool type	Connections				
	P→A	P→B	A→T	B→T	P→T
01	5	5	5	5	
02	6	6	6	6	5
06	5	5	6	5	
16	5	5	4	4	
17	1	3			
66	5	5	5	6	
32	1	1	2	2	

Curves No.

The diagram at side shows the Δp curves for spool in normal usage. The fluid used is a mineral oil with a viscosity of 46 mm<sup>2</sup>/s at 40°C; the tests have been carried out at a fluid temperature of 40°C.

### TAB.2 - D15 COIL (30W)

DC VOLTAGES	
<b>L</b>	12V
<b>M</b>	24V
<b>N</b>	48V*
<b>P</b>	110V*
<b>R</b>	98V*
<b>S</b>	196V*
<b>W</b>	Without DC coils and connectors

110Vac/50Hz  
120Vac/60Hz with rectifier

220Vac/50Hz  
240Vac/60Hz with rectifier

Voltage codes are not stamped on the plate, they are readable on the coils.

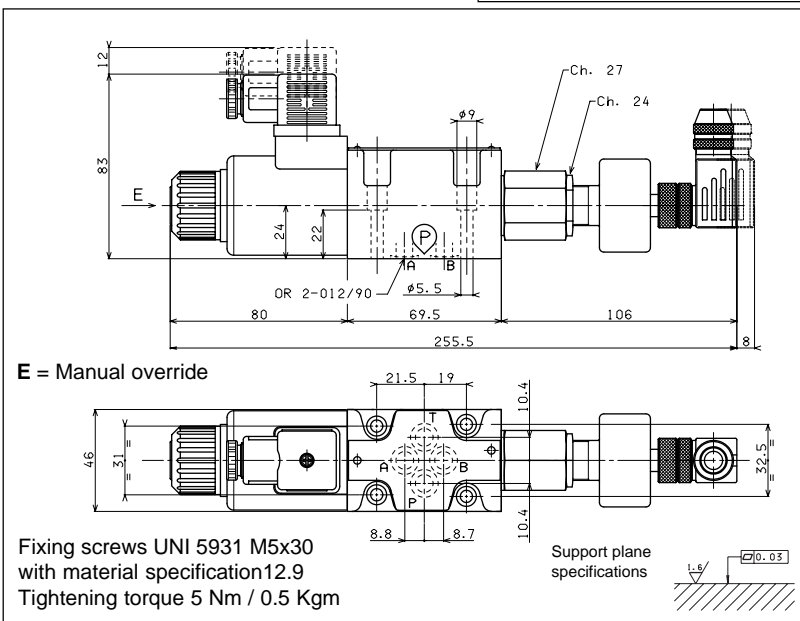
\* Special voltages

### TAB.1 - STANDARD SPOOLS FOR AD3V

POSSIBLE MOUNTING: E / F / H			
Spool type	Covering	Transient position	
01E	+		
01F	+		
02E	-		
06H*	+		
16E	+		
17F	+		
66F	+		
32E	+		

(\*) Spool with price increasing

**CE** registered mark for industrial environment with reference to the electro-magnetic compatibility. European norms:  
- EN50082-2 general safety norm - industrial environment  
- EN 50081-1 emission general norm - residential environment



### TAB.3 - VARIANTS

No variant (connectors as in the drawing)	00
Viton	V1
Emergency button	E1
Pilot light	X1
Rectifier	R1
Flow diversion without connector (coil)	S1
Without proximity connector LVDT	S3
Without coils and proximity connector	S4
Cable gland "PG 11"	C1
Viton + Pilot light	VX
AMP Junior coil	AJ
AMP Junior coil and integrated diode	AD
Coil with flying leads (175mm)	SL

Other variants relate to a special design