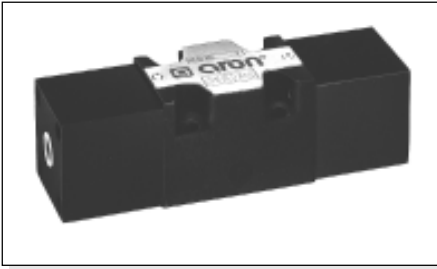


AD.3.P... PNEUMATIC OPERATION TYPE VALVES CETOP 3/NG6



1

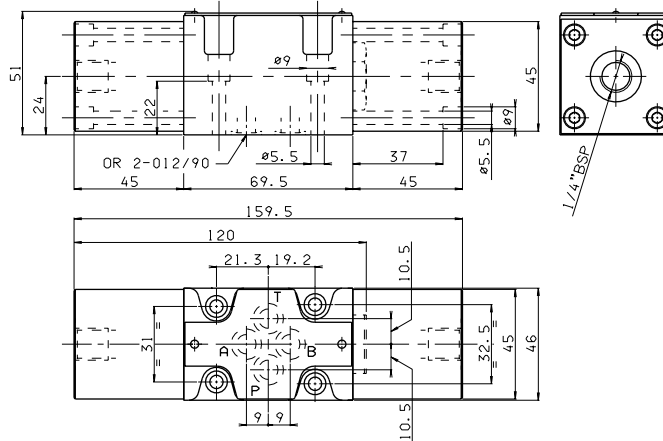


Max. pressure ports P/A/B	320 bar
Max. pressure port T	160 bar
Max. flow	60 l/min
Minimum operating pressure*	2 bar
Maximum operating pressure**	20 bar
Fluid viscosity	10 ÷ 500 mm ² /s
Fluid temperature	-25°C ÷ 75°C
Ambient temperature	-25°C ÷ 60°C
Max. contamination level	class 10 in accordance with NAS 1638 with filter β ₂₅ ≥ 75
Weight single pilot	1,2 Kg
Weight twin pilot	1,8 Kg

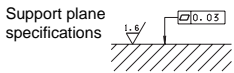
- Possible mountings: C / D / E / F / G / H / I / L / M
- Ordering code see page before

- Note: (*) In absence of counter-pressure at port T
- (**) Operating pressure: 2 + 0.027 pt (pressure at port T)

OVERALL DIMENSIONS



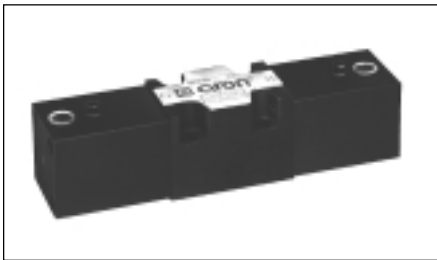
Fixing screws UNI 5931 M5x30 with material specification 12.9
Tightening torque 5 Nm / 0.5 Kg



File: EAD3P002

00/2000/e

AD.3.O... OLEODYNAMIC OPERATION TYPE VALVES CETOP 3/NG6

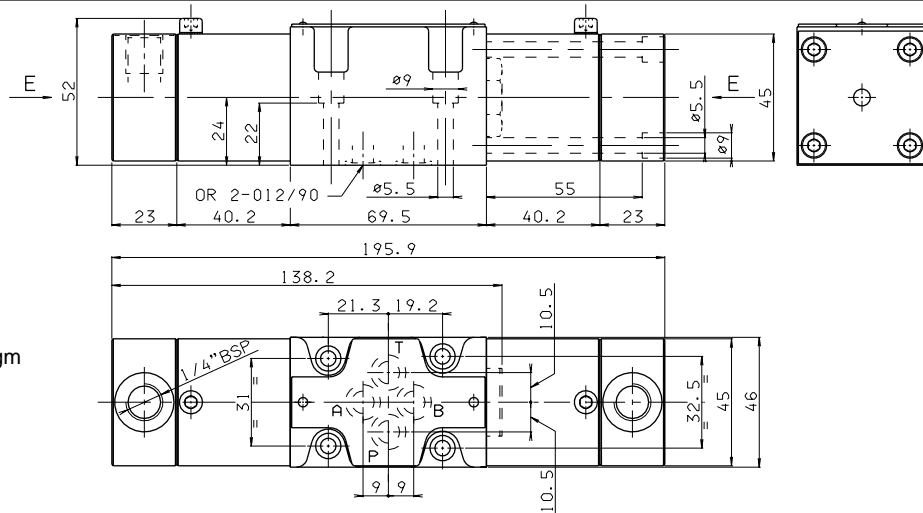


Max. pressure ports P/A/B	320 bar
Max. pressure port T	160 bar
Max. flow	60 l/min
Minimum operating pressure*	15 bar
Maximum operating pressure**	250 bar
Fluid viscosity	10 ÷ 500 mm ² /s
Fluid temperature	-25°C ÷ 75°C
Ambient temperature	-25°C ÷ 60°C
Max. contamination level	class 10 in accordance with NAS 1638 with filter β ₂₅ ≥ 75
Weight single pilot	1,5 Kg
Weight twin pilot	2,3 Kg

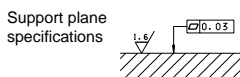
- Possible mountings: C / D / E / F / G / H / I / L / M
- Ordering code see page before

- Note: (*) In absence of counter-pressure at port T
- (**) Operating pressure: 15 + 0.1 pt (pressure at port T)

OVERALL DIMENSIONS



Fixing screws UNI 5931 M5x30 with material specification 12.9
Tightening torque 5 Nm / 0.5 Kg



File: AD30002

00/2000/e