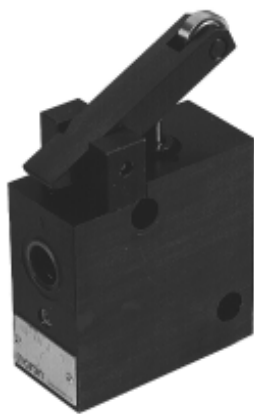


VD.40... DECELERATION VALVES

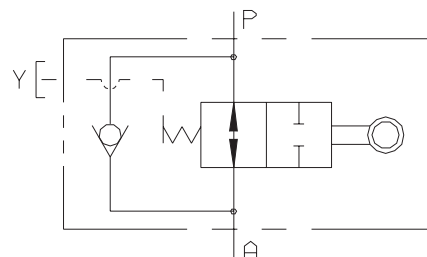


VD.40...

These valves are used as cam controlled unidirectional flow regulators. Normally mounted in line between actuator and directional valve for the displacement of carriages or slides, they enable cam controlled acceleration or deceleration of the moving mass.
A special internal check valve allows free flow the opposite direction.

| | |
|--------------------------|---|
| Max. operating pressure | 180 bar |
| Max. flow | 40 l/min |
| Leakages | 0,06 l/min |
| Cam travel | See diagram |
| Hydraulic fluids | Mineral oils DIN 51524 |
| Fluid viscosity | 10 ÷ 500 mm ² /s |
| Fluid temperature | -25°C ÷ 75°C |
| Ambient temperature | -25°C ÷ 60°C |
| Max. contamination level | class 10 in accordance with NAS 1638 with filter $\beta_{25} \geq 75$ |
| Weight | 2,8 Kg |

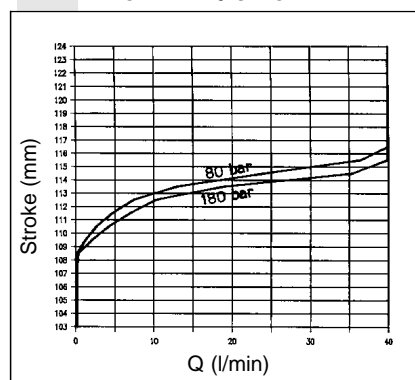
HYDRAULIC SYMBOL



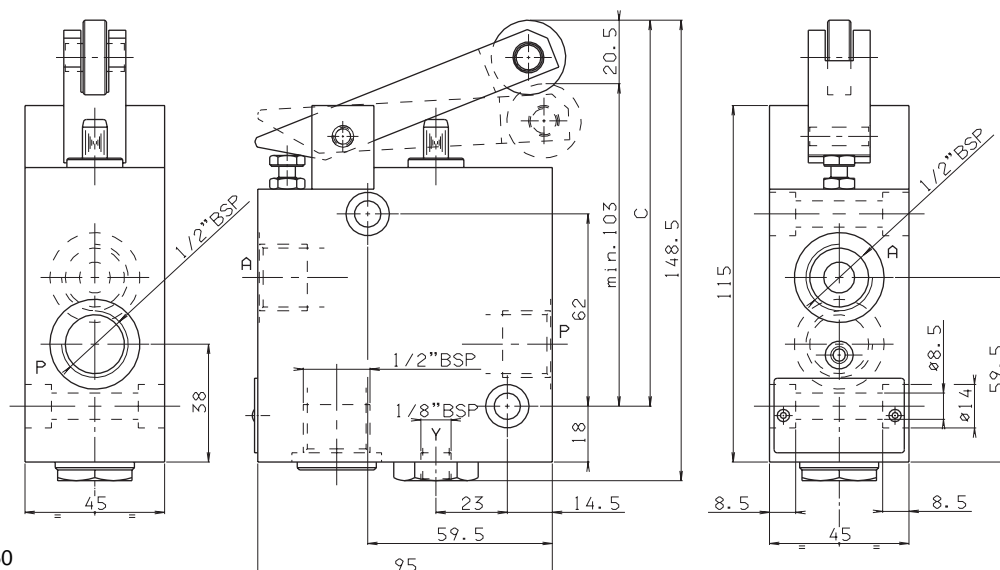
ORDERING CODE

| | |
|-----------|--|
| VD | Deceleration valve |
| 40 | Flow rate 40 l/min |
| A | 1/2" BSP ports thread |
| ** | 00 = No variant V1 = Viton FA = Not complete closing to avoid the "jump" in the controlled actuator |
| 3 | Serial No. |

FLOW RATE / STROKE



OVERALL DIMENSIONS



Fixing screws UNI 5931 M8x50
with material specification 12.9
Tightening torque 8 Nm / 0.8 Kg

