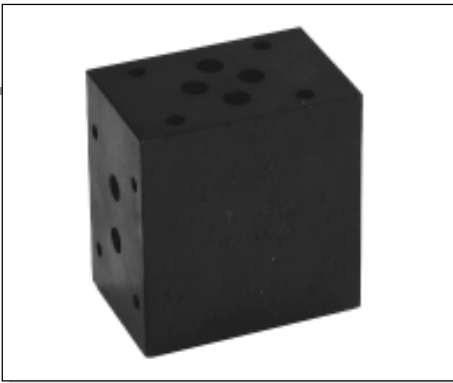


AM.66... MODULAR COMPENSATED FLOW CONTROL ASSEMBLY CETOP 3



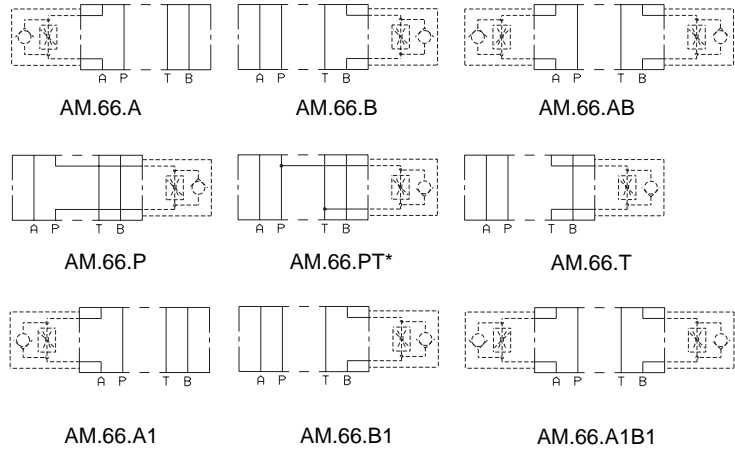
This is an intermediate block (AM.66) for modular mounting of one or two flow rate regulators type QC.3...

The flow regulator type QC.3.2... must be ordered separately.

| | |
|--------------------------|---|
| Max. operating pressure | 320 bar |
| Hydraulic fluids | Mineral oils DIN 51524 |
| Fluid viscosity | 10 ÷ 500 mm ² /s |
| Fluid temperature | -25°C ÷ 75°C |
| Ambient temperature | -25°C ÷ 60°C |
| Max. contamination level | class 10 in accordance with NAS 1638 with filter $\beta_{25} \geq 75$ |
| Weight | 1,3 Kg |

| | |
|------------------|----------------|
| AM.66... | |
| QC.3.2... | CH. III PAGE 2 |
| SCREWS AND STUDS | CH.IV PAGE 21 |

HYDRAULIC SYMBOLS



PT * = From line towards exhaust (**P** → **T** drain)

• In order to obtain versions with regulation on **T**, the AM.66.P regulator carrying block should be turned by 180°.

• In order to obtain versions **A1**, **B1** and **A1B1** the AM.66.B, AM.66.A or AM.66.AB regulators carrying block should be turned by 180°.

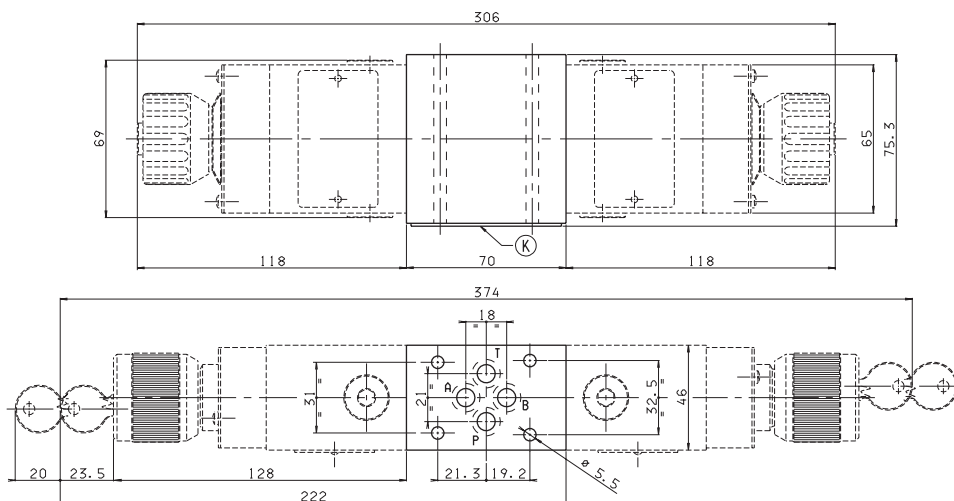
4

ORDERING CODE

| | |
|-----------|--|
| AM | Modular valve |
| 66 | Size |
| ** | Control on lines A / B / P / PT* / AB For T / A1 / B1 / A1B1 versions see table "Hydraulic symbols" |
| ** | 00 = No variant V1 = Viton |
| 3 | Serial No. |

OVERALL DIMENSIONS

K = OR plate



Support plane specifications

