

AM.5.QF... MODULAR FLOW REGULATOR CETOP 5



AM.5.QF...

SCREWS AND STUDS

CH. IV PAGE 35

AM.5.QF type one way non-compensated throttle valve are fitted with an O-Ring mounting plate which allows its assembly for either input or output regulation. Adjustment is obtained by means of a grub screw or a plastic knob. They are available in the four regulating configurations shown in the hydraulic diagrams.

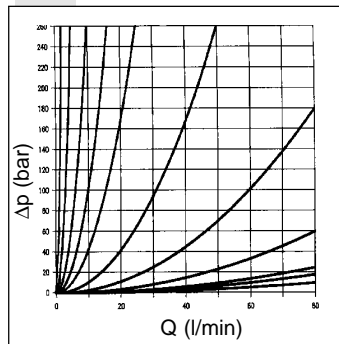
These valves are supplied with related hydraulic scheme. In case of inversion of the setted flow direction, turn valve 180° right or left (attention: in this case the label will appear upside down with A and B inverted).

Max. operating pressure	250 bar
Flow rate regulation	on 9 screw turns
Max. flow	80 l/min
Hydraulic fluids	Mineral oils DIN 51524
Fluid viscosity	10 ÷ 500 mm ² /s
Fluid temperature	-25°C ÷ 75°C
Ambient temperature	-25°C ÷ 60°C
Max. contamination level	class 10 in accordance with NAS 1638 with filter $\beta_{25} \geq 75$
Weight	3,7 Kg

ORDERING CODE

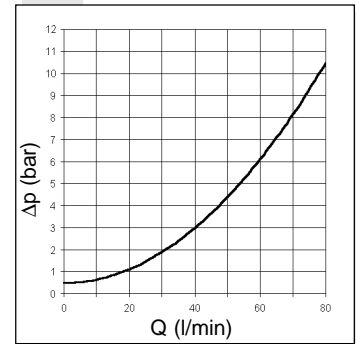
AM	Modular valve
5	CETOP 5/NG10
QF	Non compensated throttle valve
**	Control on lines A / B / P / AB
*	Type of adjustment M = Plastic knob C = Grub screw
**	00 = No variant V1 = Viton
4	Serial No.

FLOW RATE

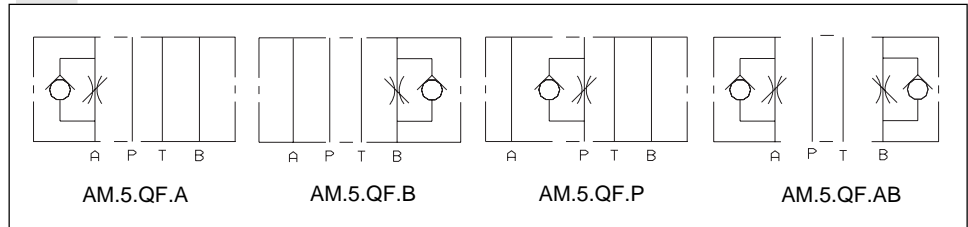


FREE FLOW

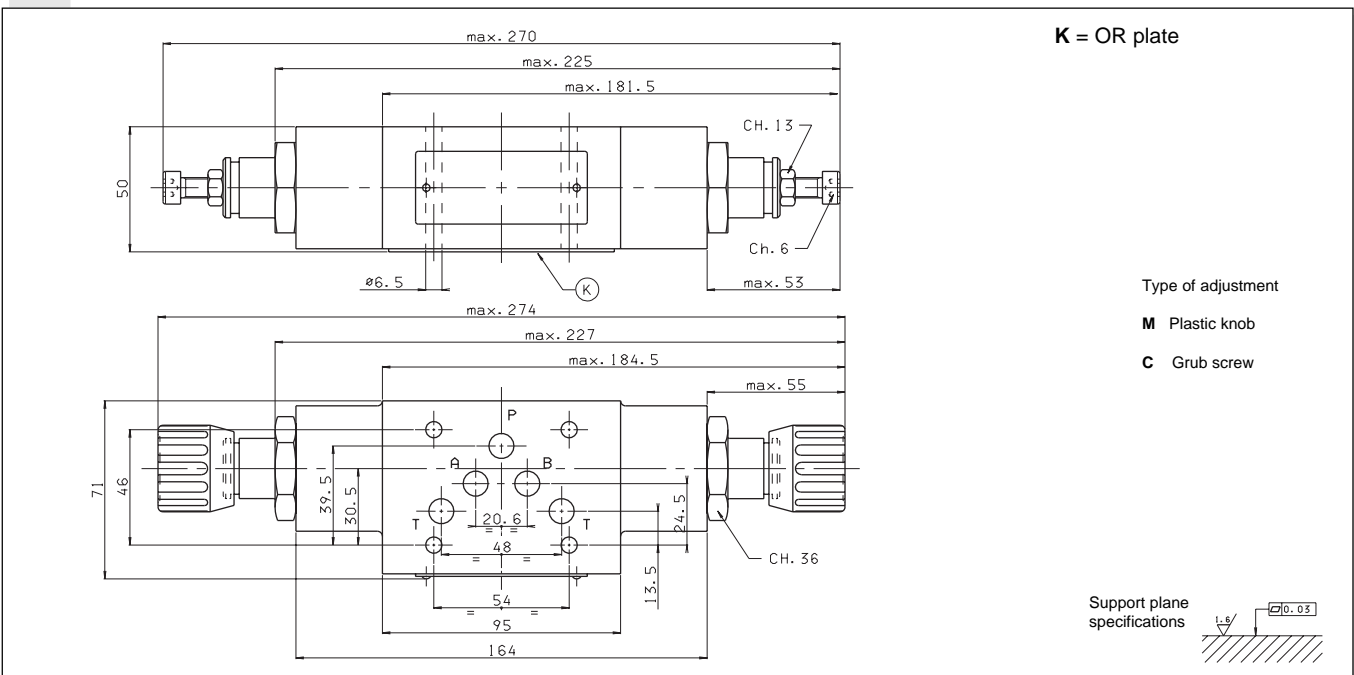
TOWARDS CHECK VALVE



HYDRAULIC SYMBOLS



OVERALL DIMENSIONS



4