

# AM.3.VS... MODULAR SEQUENCING VALVES CETOP 3



**AM.3.VS...**

CVS.20... CH. V PAGE 23

SCREWS AND STUDS CH.IV PAGE 21

The sequence valve are used to assure that a secondary circuit is pressurized when the setting pressure is reached.

These valves grant a minimum variation of the setting pressure with a changing flow up to 40 l/min (see diagram).

Three spring types allow adjustment within the range 7 ÷ 250 bar. Manual adjustment is available by a grub screw or plastic knob.

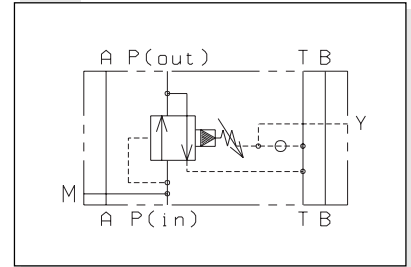
The cartridge used is the "CVS" type.

Max. operating pressure	320 bar
Setting ranges:	Spring 1 max. 60 bar
	Spring 2 max. 120 bar
	Spring 3 max. 250 bar
Max. flow	40 l/min
Draining on port T	0,5 ÷ 0,7 l/min
Hydraulic fluids	Mineral oils DIN 51524
Fluid viscosity	10 ÷ 500 mm <sup>2</sup> /s
Fluid temperature	-25°C ÷ 75°C
Ambient temperature	-25°C ÷ 60°C
Max. contamination level	class 10 in accordance with NAS 1638 with filter β <sub>25</sub> ≥ 75
Weight	1,36 Kg

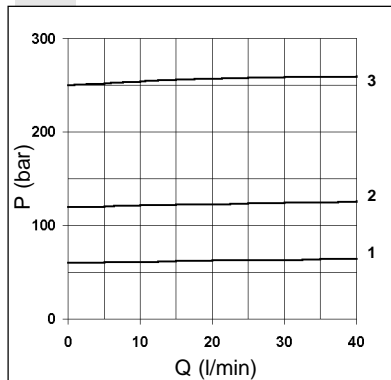
**ORDERING CODE**

<b>AM</b>	Modular valve
<b>3</b>	CETOP 3/NG6
<b>VS</b>	Sequencing valve
<b>*</b>	Drain connection E = External I = Internal (Standard)
<b>*</b>	Type of adjustment M = Plastic knob C = Grub screw
<b>*</b>	Setting ranges 1 = max. 60 bar (white spring) 2 = max. 120 bar (yellow spring) 3 = max. 250 bar (green spring)
<b>**</b>	00 = No variant V1 = Viton
<b>1</b>	Serial No

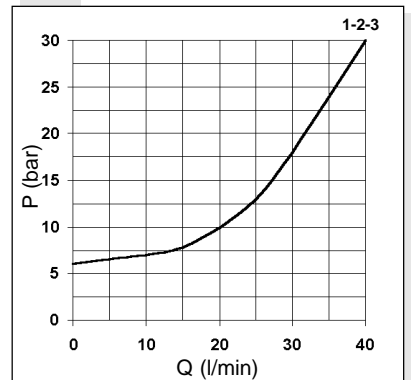
**HYDRAULIC SYMBOL**



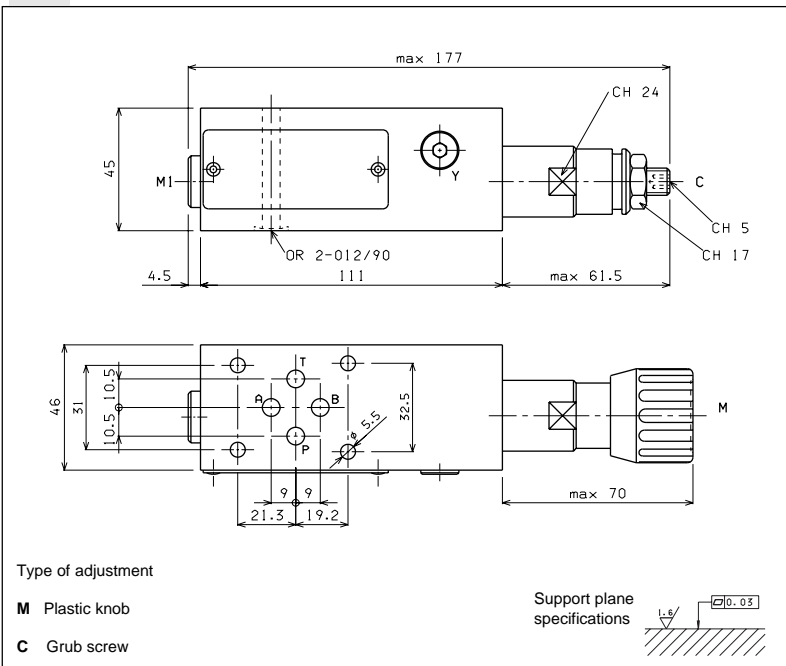
**PRESSURE-FLOW RATE**



**MINIMUM SETTING PRESSURE**



**OVERALL DIMENSIONS**



Curves n° 1 - 2 - 3 = setting ranges

The fluid used is a mineral oil with a viscosity of 46 mm<sup>2</sup>/s at 40°C. The tests have been carried out at a fluid temperature of 50°C.

To changes valves AM.3.VS... from internal to external drainage it is necessary:

- screw out the plug on the Y port
- screw out the plug T.C.E.I. M8x1 from the body
- screw in a screw S.T.E.I. M6
- rescrew the T.C.E.I. M8x1 plug on the body

**NOTE:** the external draining can be used as a piloting line (please, concta our Technical Service for other informations)