

AM.3.UP... / AM.3.UP1... MODULAR PILOT OPERATED CHECK VALVES CETOP 3



AM.3.UP / AM.3.UP1...

SCREWS AND STUDS

CH.IV PAGE 21

AM.3.UP type modular check valves allow free flow in one direction by raising a conical seated poppet valve, while in the opposite direction the fluid can return by means of a small piston piloted by the other line pressure (piloted side).

They are available on single A or B lines, and double A and B lines (see hydraulic symbols).

A pre-opening version is also available (AM3UP1..).

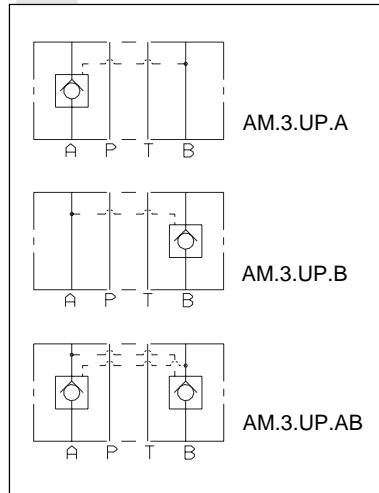
Max. operating pressure	320 bar
Minimum opening pressure spring 1	1 bar
Minimum opening pressure spring 5	5 bar
Piloting ratio AM.3.UP	1:4
Piloting ratio AM.3.UP1	1:12,5
Max. flow	40 l/min
Hydraulic fluids	Mineral oils DIN 51524
Fluid viscosity	10 ÷ 500 mm ² /s
Fluid temperature	-25°C ÷ 75°C
Ambient temperature	-25°C ÷ 60°C
Max. contamination level	class 10 in accordance with NAS 1638 with filter $\beta_{25} \geq 75$
Weight	1 Kg

4

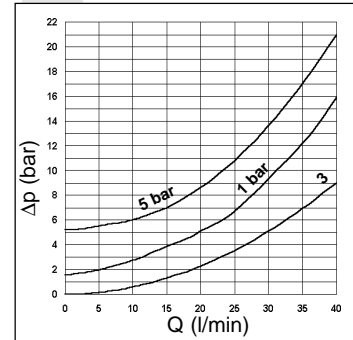
ORDERING CODE

AM	Modular valve
3	CETOP 3/NG6
**	UP = Piloted check valve UP1 = With pre-opening
**	Control on lines A / B / AB
*	Minimum opening pressure 1 = 1 bar 5 = 5 bar
**	00 = No variant V1 = Viton
3	Serial No.

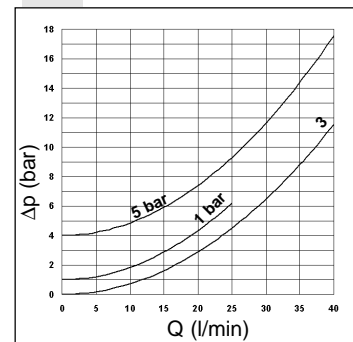
HYDRAULIC SYMBOLS



PRESSURE DROPS AM3UP

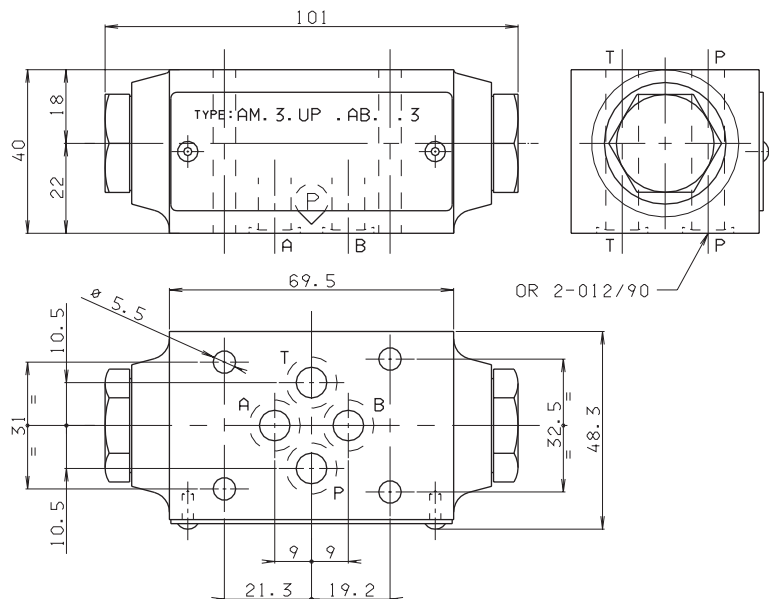


PRESSURE DROPS AM3UP1



3 = Piloted side flow

OVERALL DIMENSIONS



Support plane specifications

