

# AM.2.UP... MODULAR PILOT OPERATED CHECK VALVES CETOP 2



**AM.2.UP...**

SCREWS AND STUDS

CH.IV PAGE 6

AM.2.UP type modular check valves allow one way free flow by raising a conical shutter, while in the opposite direction the fluid can return by means of a small piston piloted by the pressure in the other line.

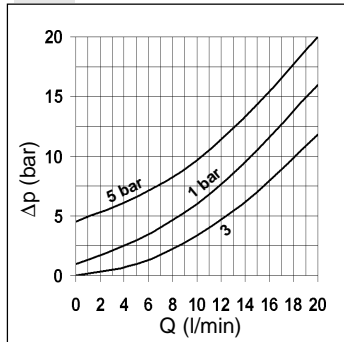
They are available on single A or B lines, and on double A and B lines (see hydraulic symbols).

Max. operating pressure	250 bar
Minimum opening pressure spring 1	1 bar
Minimum opening pressure spring 5	5 bar
Piloting ratio:	1:4
Max. flow	20 l/min
Hydraulic fluids	Mineral oils DIN 51524
Fluid viscosity	10 ÷ 500 mm <sup>2</sup> /s a 50°C
Fluid temperature	-20°C ÷ 75°C
Max. contamination level	class 10 in accordance with NAS 1638 with filter $\beta_{25} \geq 75$
Weight	0,5 Kg

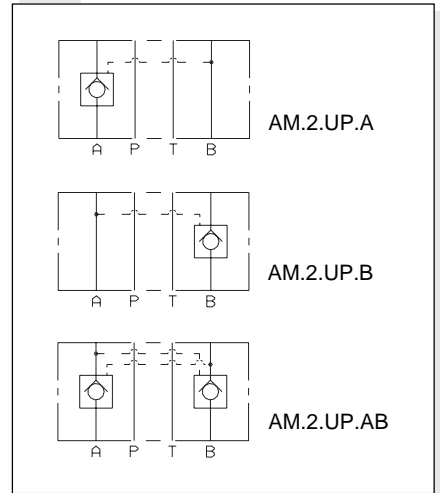
### ORDERING CODE

<b>AM</b>	Modular valve
<b>2</b>	CETOP 2/NG4
<b>UP</b>	Piloted check valve
<b>**</b>	Control on lines <b>A / B / AB</b>
<b>*</b>	Minimum opening pressure <b>1</b> = 1 bar <b>5</b> = 5 bar
<b>**</b>	<b>00</b> = No variant <b>V1</b> = Viton
<b>1</b>	Serial No.

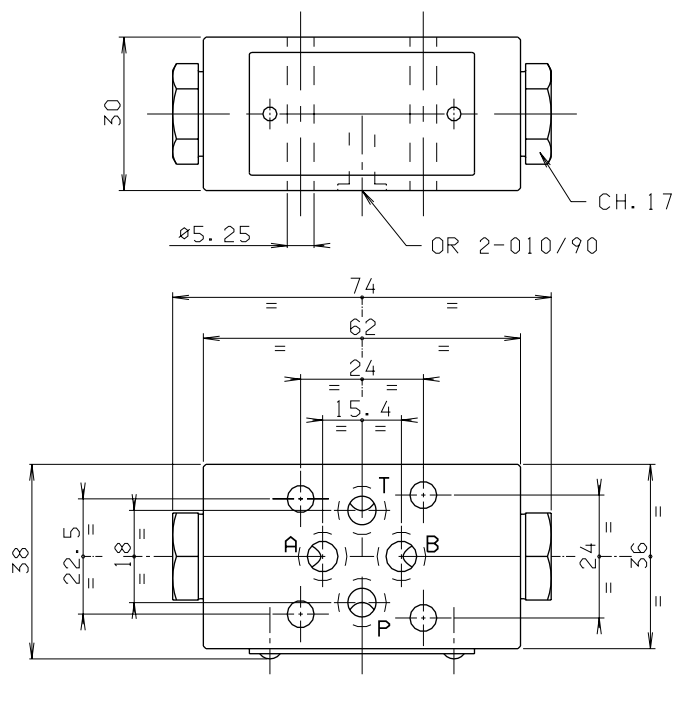
### PRESSURE DROPS



### HYDRAULIC SYMBOLS



### OVERALL DIMENSIONS



Support plane specifications

