

AM.2.UD... MODULAR DIRECT CHECK VALVES CETOP 2



AM.2.UD...

SCREWS AND STUDS

CH.IV PAGE 6

AM.2.UD type modular check valves allow one way free flow, while preventing any flow in the opposite direction by means of a conical seated poppet.

They are available on single P and T lines (see hydraulic symbols).

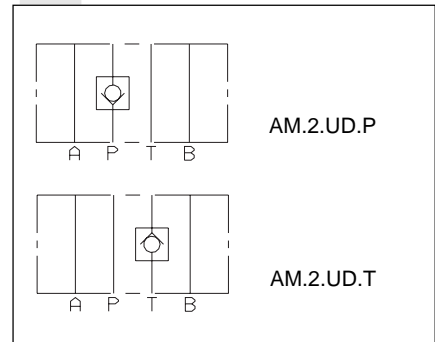
1 bar spring is standard, while a 5 bar rated spring is available on request.

Max. operating pressure	250 bar
Minimum opening pressure spring 1	1 bar
Minimum opening pressure spring 5	5 bar
Max. flow	20 l/min
Hydraulic fluids	Mineral oils DIN 51524
Fluid viscosity	10 ÷ 500 mm ² /s a 50°C
Fluid temperature	-20°C ÷ 75°C
Max. contamination level	class 10 in accordance with NAS 1638 with filter $\beta_{25} \geq 75$
Weight	0,4 Kg

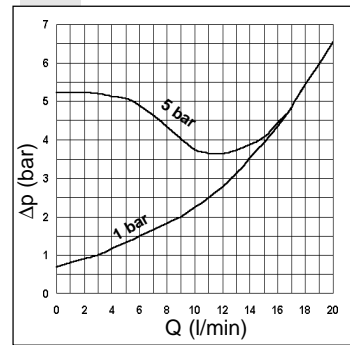
ORDERING CODE

AM	Modular valve
2	CETOP 2/NG4
UD	Direct check valve
*	Control on lines P / T
*	Minimum opening pressure 1 = 1 bar 5 = 5 bar
**	00 = No variant V1 = Viton
1	Serial No.

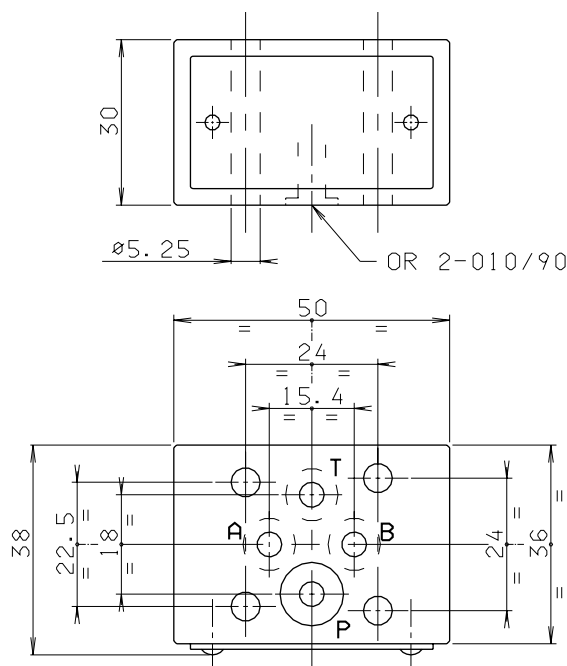
HYDRAULIC SYMBOLS



PRESSURE DROPS



OVERALL DIMENSIONS



Support plane specifications $0.8/0.02$