

A.66... MODULAR FLOW CONTROL VALVES FAST / SLOW ASSEMBLY CETOP 3



A.66...	
D15 DC COIL	CH. I PAGE 20
K12 AC SOLENOIDS	CH. I PAGE 20
STANDARD CONNECTORS	CH. I PAGE 21
QC.3.2...	CH.III PAGE 2
SCREWS AND STUDS	CH.IV PAGE 21

This is modular assembly ON/OFF solenoid valve which, by fitting suitable 2 way regulator, allows two speed operation in the same system via an electrical changeover command. **The flow rate regulator type QC.3.2... must be ordered separately.** **The operational limit curves have been obtained with the regulator fully closed, and those same limits improve gradually with the opening of the regulator**

• Solenoids used are standard type D15 for DC voltage and K12 for AC voltage.

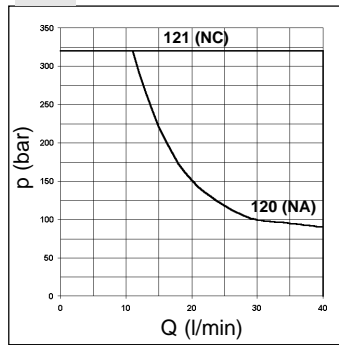
Max. operating pressure	320 bar
Hydraulic fluids	Mineral oils DIN 51524
Fluid viscosity	10 ÷ 500 mm ² /s
Fluid temperature	-25°C ÷ 75°C
Ambient temperature	-25°C ÷ 60°C
Max. contamination level	class 10 in accordance with NAS 1638 with filter β ₂₅ ≥ 75
Weight with an AC solenoid	2,2 Kg
Weight with a DC solenoid	2,4 Kg

The test have been carried out at a voltage 10% lower than rated voltage and with a fluid temperature of 50 degrees C. The fluid used was a mineral based oil with a viscosity of 46 mm²/s at 40 degrees C.

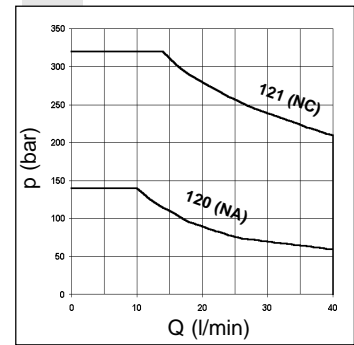
ORDERING CODE

- A** Speed control valve
- 66** Size
- E** Electrical operator
- ***** **120** = Normally open
121 = Normally closed
See table hydraulic symbols
- *** Control on lines **A / B / P / T**
(see hydraulic symbols)
The interface holder "H" must be turned by 180° in order to obtain the A1 and B1 versions.
- *** Voltages in AC
A = 24V/50Hz
B = 48V/50Hz*
C = 110V/50Hz-115V/60Hz
D = 220V/50Hz-230V/60Hz
E = 240V/50Hz*
F = 24V/60Hz*
K = Without AC coils
(*) Special voltages
- DC voltages**
L = 12V
M = 24V
T = 42V* 110Vac/50Hz with rectifier
N = 48V* 220Vac/50Hz with rectifier
R = 98V*
S = 196V*
W = Without DC coils
(*) Special voltages
- **** **00** = No variant
V1 = Viton
X1 = Indicator light
R1 = Rectifier
S1 = Valve without connector
C1 = Cable gland "PG11"
XR = Indicator light + rectifier
- *** **3** = Serial No. for AC voltages
4 = Serial No. for DC voltages

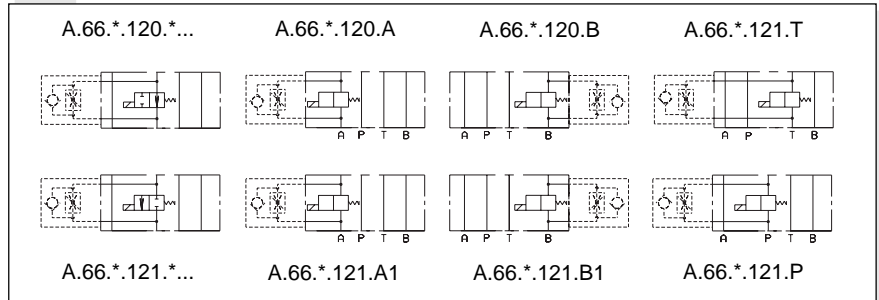
LIMITS OF USE DC SOLENOID



LIMITS OF USE AC SOLENOID



HYDRAULIC SYMBOLS



OVERALL DIMENSIONS

