



AM.5.H...

AM.5.H... 2 AND 3 WAY HYDROSTATS CETOP 5



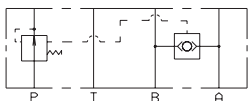
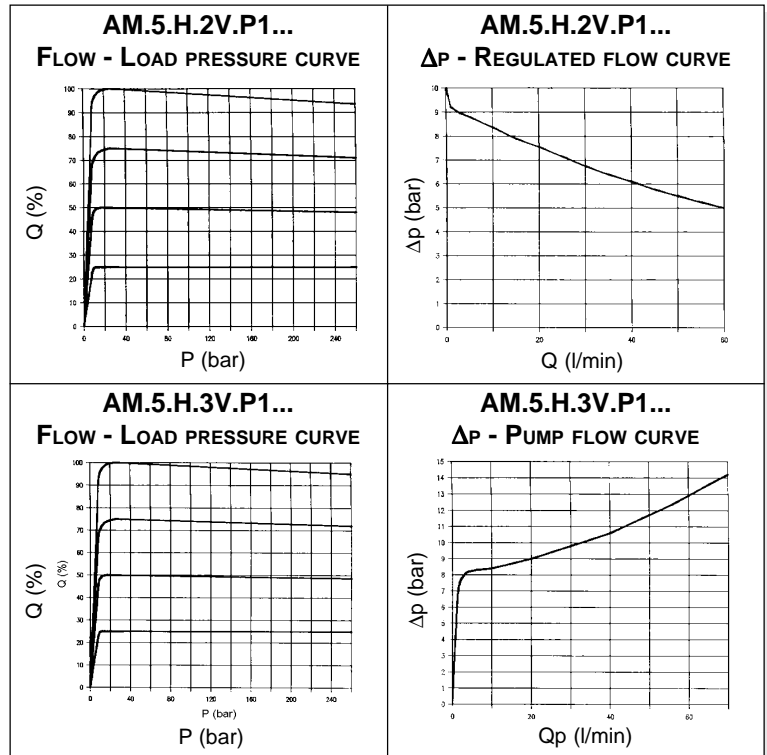
The 2 or 3 way pressure regulator type AM.5.H ensures a constant set flow rate in the presence of varying system load (pressure) by keeping constant the pressure drop ($\Delta p = 8$ bar) in relation to the flow rate regulation.

In order to achieve the direction and flow rate dual control function, it is normally used together with a proportional solenoid valve.

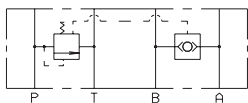
Max. flow AM.5.H.2V...	65 l/min
Max. flow AM.5.H.3V...	70 l/min
Max. operating pressure	350 bar
Δp adjustment	8 bar
Fluid viscosity	$10 \div 500 \text{ mm}^2/\text{s}$
Fluid temperature	$-25^\circ\text{C} \div 75^\circ\text{C}$
Ambient temperature	$-25^\circ\text{C} \div 60^\circ\text{C}$
Max. contamination level	class 8 in accordance with NAS 1638 with filter $\beta_{10} \geq 75$
Weight	2,7 Kg

ORDERING CODE

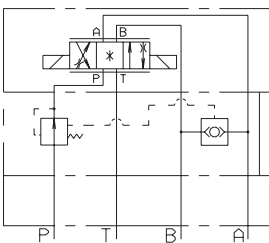
AM	Modular valve
5	CETOP 5/NG10
H	Hydrostat
**	2V = 2 way 3V = 3 way
P1	Function at port P
08	Differential pressure (Δp) Δp 8 bar
**	00 = No variant V1 = Viton
1	Serial No.



AM.5.H.2V.P1...



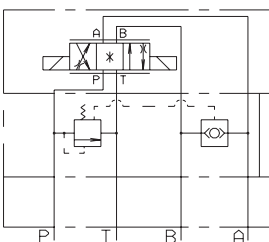
AM.5.H.3V.P1...



Proportional valve
XD.5.C...

Hydrostat
AM.5.H.2V...

BASE

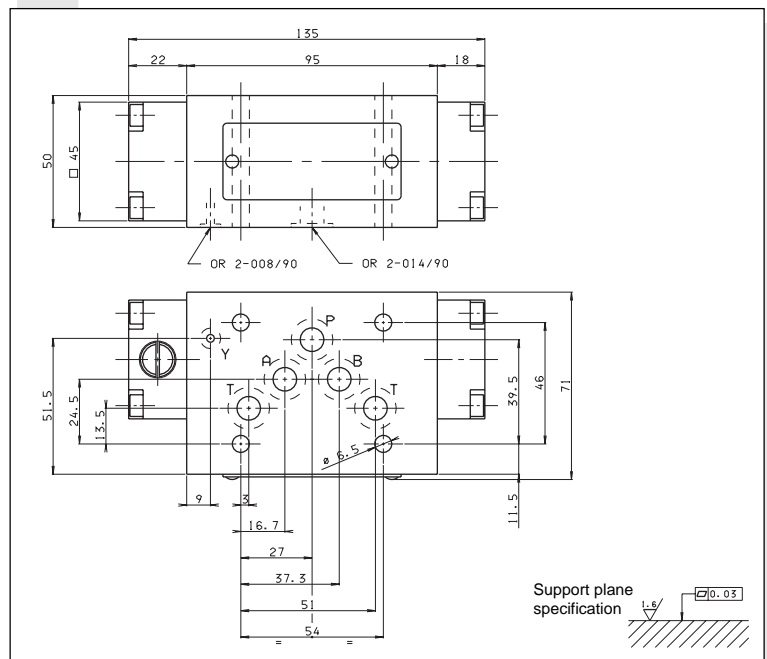


Proportional valve
XD.5.C...

Hydrostat
AM.5.H.3V...

BASE

OVERALL DIMENSIONS



Support plane
specification $1.5/0.03$

