

## AM.3.H... 2 AND 3 WAY HYDROSTATS CETOP 3



AM.3.H...

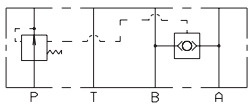
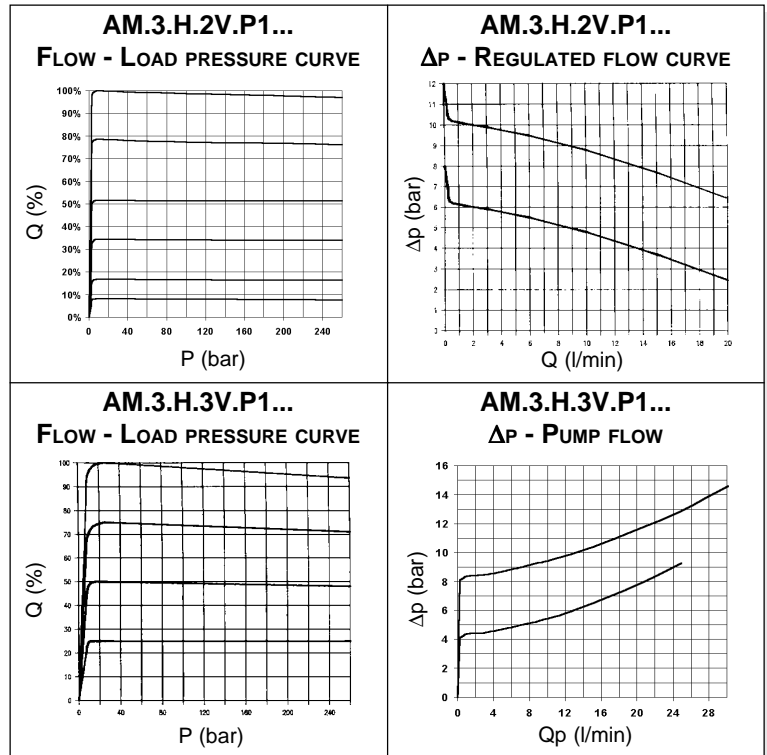
The 2 or 3 way pressure regulator type AM.3.H ensure the constant set flow rate in the presence of varying system load (pressure) by keeping constant the pressure drop ( $\Delta p = 4/8$  bar) in relation to the flow rate regulation.

In order to achieve the direction and flow rate dual control function, it is normally used together with a proportional solenoid valve

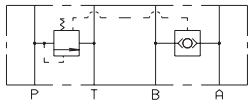
Max. flow	25 l/min
Max. operating pressure	350 bar
$\Delta p$ adjustment	4 bar 8 bar
Fluid viscosity	10 ÷ 500 mm <sup>2</sup> /s
Fluid temperature	-25°C ÷ 75°C
Ambient temperature	-25°C ÷ 60°C
Max. contamination level	class 8 in accordance with NAS 1638 with filter $\beta_{10} \geq 75$
Weight	1,4 Kg

### ORDERING CODE

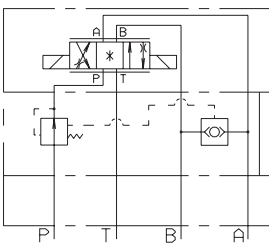
<b>AM</b>	Modular valve
<b>3</b>	CETOP 3/NG6
<b>H</b>	Hydrostat
<b>**</b>	<b>2V</b> = 2 way <b>3V</b> = 3 way
<b>P1</b>	Function at port P
<b>**</b>	Differential pressure ( $\Delta p$ ) <b>04</b> = $\Delta p$ 4 bar <b>08</b> = $\Delta p$ 8 bar
<b>**</b>	<b>00</b> = No variant <b>V1</b> = Viton
<b>1</b>	Serial No.



AM.3.H.2V.P1...



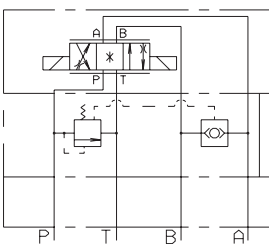
AM.3.H.3V.P1...



Proportional valve  
XD.3.C...

Hydrostat  
AM.3.H.2V...

BASE



Proportional valve  
XD.3.C...

Hydrostat  
AM.3.H.3V...

BASE

### OVERALL DIMENSIONS

