

VRS... IN LINE MOUNTING

SIMPLE ACTING PILOTED CHECK VALVES

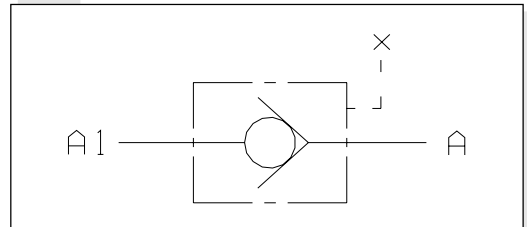


VRS...

Direct simple piloted check valves type VRS.. allow free flow in one direction but by using their external piloting feature it is also possible to obtain fluid flow in the direction opposite to that of the free flow.
 When the piloting line has no pressure these valves fulfil the normal one-way check valve function. A guided conical shutter blocks the fluid flow in the opposite direction ensuring no blow-by. The body of these valves is zinc yellow steel made, while their conical shutter is manufactured in heat-treated steel.

Max. operating pressure	350 bar
Standard opening pressure	0,5 bar
Piloting ratio	See table below
Max. flow	85 l/min
Hydraulic fluid	Mineral oils DIN 51524
Fluid viscosity	2.8 ÷ 380 mm ² /s
Fluid temperature	-20°C ÷ 70°C
Max. contamination level	class 10 in accordance with NAS 1638 with filter $\beta_{25} \geq 75$
Weight	See table below

HYDRAULIC SYMBOL

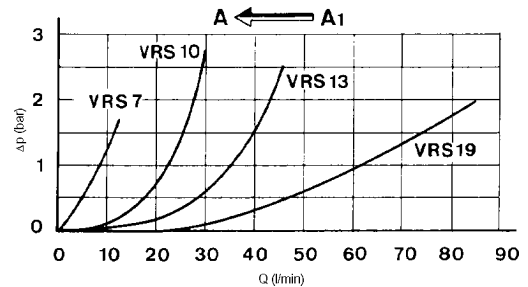
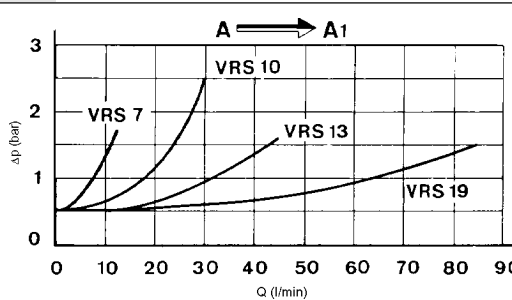


ORDERING CODE

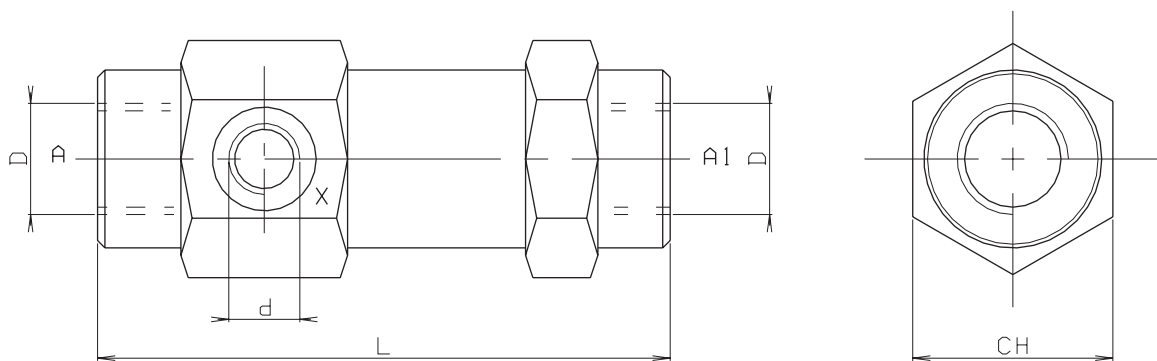
- VRS** Simple acting piloted check valve
- **** Size
07
10
13
19
- 1** Opening pressure
0.5 bar (standard)
- 00** No variant
- 1** Serial No.

Test carried out with mineral based oil with a viscosity of 24 mm²/s at 50°C

PRESSURE DROPS - FLOW



OVERALL DIMENSIONS



Valve type	Max flow (l/min)	Max Pressure (bar)	L	CH	Piloting Ratio	d	D	Weight (Kg)
VRS07	12	350	103	36	1 : 9	1/4"BSP	1/4"BSP	0.65
VRS10	30	310	109	40	1 : 6	1/4"BSP	3/8"BSP	0.82
VRS13	45	310	120	42	1 : 4,5	1/4"BSP	1/2"BSP	0.96
VRS19	85	300	131	55	1 : 3,7	1/4"BSP	3/4"BSP	1.95