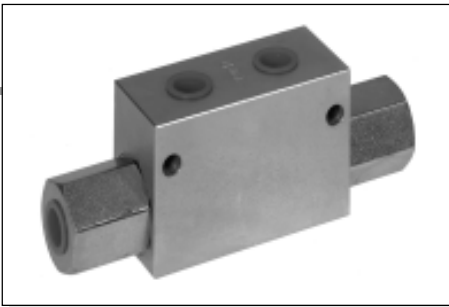


VRD... IN LINE MOUNTING

DOUBLE ACTING PILOTED CHECK VALVES



VRD...

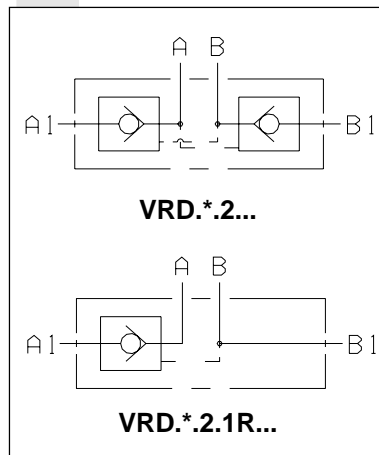
Piloted double check valves type VRD.. can be hydraulically unblocked via an internal small piloting piston. They are used in those hydraulic systems where it is necessary to block an actuator and to make would tend to modify its position. Fluid flow in the A→A1 direction allows the small piloting piston to open the check function on port B1, thus allowing B1→B free flow. By directing the fluid flow B→B1 the opposite function is obtained. The body of these valves is zincked yellow steel made, while their conical shutter is manufactured in heat-treated steel.

Max. operating pressure	350 bar
Standard opening pressure	2 bar
Piloting ratio	See table below
Max. flow	85 l/min
Hydraulic fluid	Mineral oils DIN 51524
Fluid viscosity	2.8 ÷ 380 mm ² /s
Fluid temperature	-20°C ÷ 70°C
Max. contamination level	class 10 in accordance with NAS 1638 with filter β ₂₅ ≥ 75
Weight	See table below

ORDERING CODE

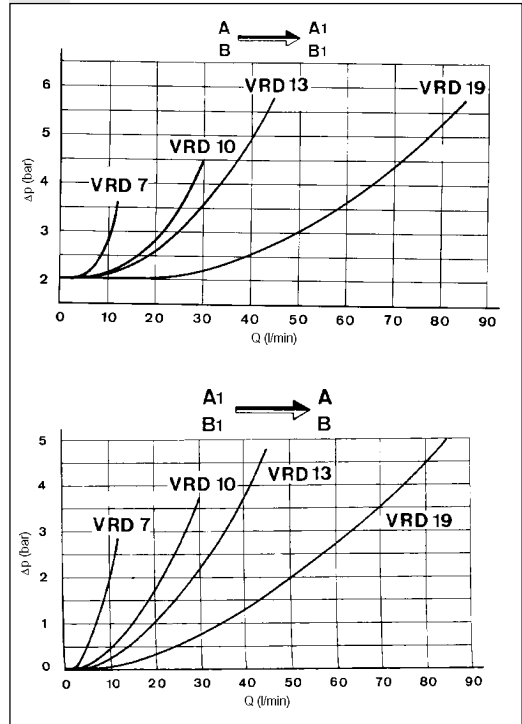
VRD	Double acting piloted check valve
**	Size 07 10 13 19
2	Opening pressure 2 bar (standard)
1R	With one check valve only (omit if not required)
00	No variant
1	Serial No.

HYDRAULIC SYMBOLS

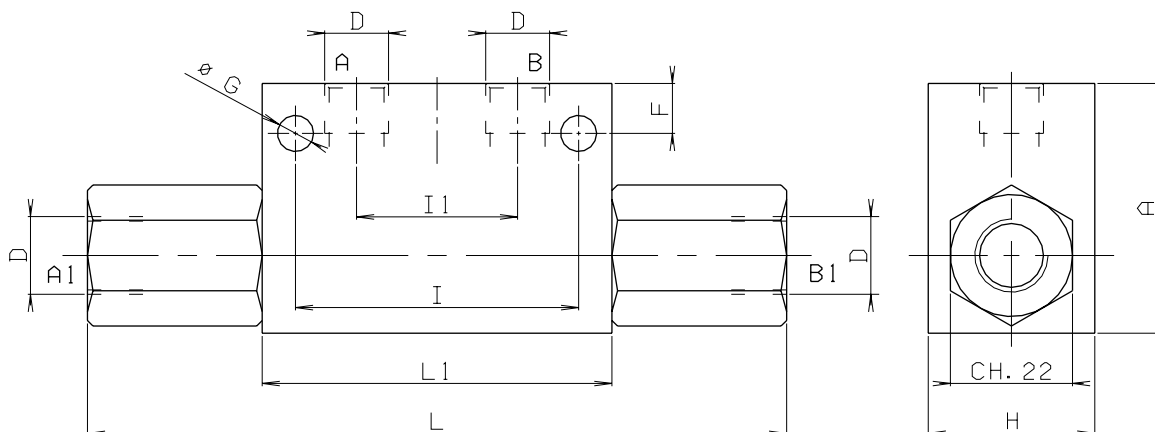


Test carried out with mineral based oil with a viscosity of 24 mm²/s at 50°C

PRESSURE DROPS - FLOW



OVERALL DIMENSIONS



Valve type	Max flow (l/min)	Max Pressure (bar)	L	L1	Piloting ratio	D	I1	I	F	G	H	A	Weight (Kg)
VRD07	12	350	126	63	1 : 4	1/4"BSP	29	51	9	6.5	30	45	0.65
VRD10	30	300	158	90	1 : 6	3/8"BSP	40	75	17	8	40	60	1.75
VRD13	45	300	174	90	1 : 4	1/2"BSP	40	75	17	8	40	60	1.78
VRD19	85	280	212	120	1 : 3,6	3/4"BSP	60	104	16	9	50	70	3.25