

QFU... IN LINE MOUNTING

ONE-WAY FLOW CONTROL VALVES



QFU...

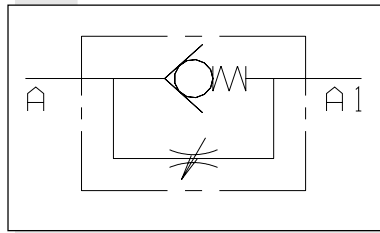
One-way adjustable flow regulating type QFU.. allow free flow in one direction by means of a check valve while controlling it in the opposite direction. Their operation depends on the fluid pressure and viscosity. Flow regulation is obtained by turning a knurled knob, which permits control of the flow rate via a graduated scale from which it can be read. The special needle configuration allows an a easy and precise control. The body of these valves is zincked yellow steel made, while the internal components are manufactured in heat-treated steel. Their particular construction permits both panel and in-line mounting.

Max. operating pressure	300 bar
Standard opening pressure	0,5 bar
Max. flow	85 l/min
Hydraulic fluid	Mineral oils DIN 51524
Fluid viscosity	2.8 ÷ 380 mm ² /s
Fluid temperature	-20°C ÷ 70°C
Max. contamination level	class 10 in accordance with NAS 1638 with filter $\beta_{25} \geq 75$
Weight	See table below

ORDERING CODE

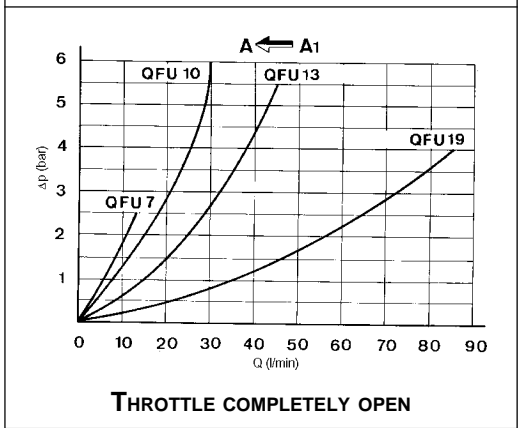
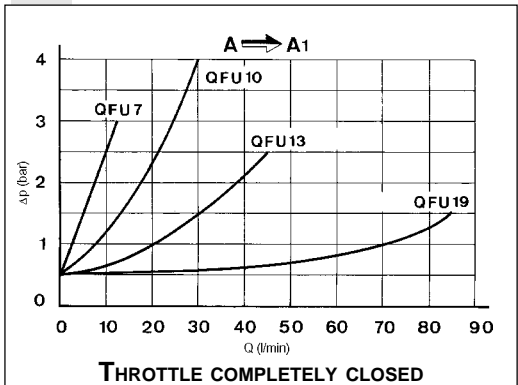
- QFU** One-way flow control valve
- **** Size
07
10
13
19
- 1** Opening pressure
0.5 bar (standard)
- G** Fixing ring nut
(omit if not required)
- 00** No variant
- 1** Serial No.

HYDRAULIC SYMBOL



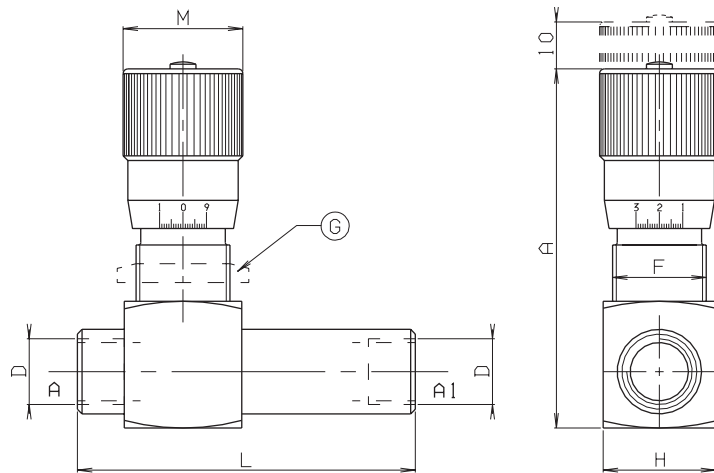
Test carried out with mineral based oil with a viscosity of 24 mm²/s at 50°C

PRESSURE DROPS - FLOW



OVERALL DIMENSIONS

G = Fixing ring nut on request



Valve type	Max flow (l/min)	Max. pressure (bar)	L	A	D	M	H	F	Weight (Kg)
QFU07	12	300	72	80	1/4"BSP	25	25	M20x1	0.25
QFU10	30	300	78	85	3/8"BSP	32	30	M25x1.5	0.42
QFU13	45	280	92	92	1/2"BSP	35	35	M30x1.5	0.60
QFU19	85	250	106	105	3/4"BSP	40	45	M35x1.5	1.10