

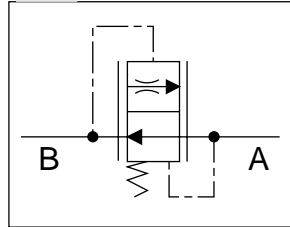


T-VSC...

They are flow regulated compensated with fixed setting valves. They keep constant flow independently from oil pressure. They keep constant down speed independently from load value.

Max. operating pressure	250 bar
Max. flow	18 l/min
Flow controlled	see Table
Hydraulic fluids	Mineral oils DIN 51524
Fluid viscosity	15 ÷ 100 mm ² /s ISO 3448
Operating temperatur	-15°C ÷ 70°C
Max. contamination level	18/14 ISO 4406
Weight	See table below

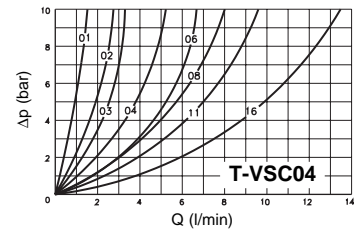
SIMBOLO IDRAULICO



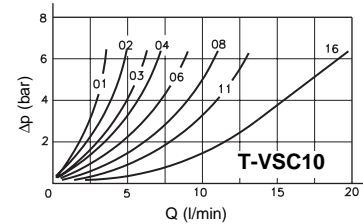
PRESSURE DROPS

FREE FLOW A → B

T-VSC04 : fluid used mineral based oil with viscosity 32 cSt at 40°C.



T-VSC10: fluid used mineral based oil with viscosity 15 cSt at 40°C.



ORDERING CODE

T-	Category
VSC	Flow compensated fixed valve
**	Size: 04 = 1/4" BSP 10 = 3/8" BSP
**	Reference No. Controlled flow (see Table)
00	No variant

FLOW CONTROLLED BY "X" PORT B → A l/min

T-VSC04			
Controlled Q (l/min)		∅X	Reference
Min.	Max.	(mm)	
0.8	2	1	01
1.6	2.3	1.25	02
3.3	4	1.5	03
3.8	4.8	1.75	04
5	6.5	2	06
6.3	7.5	2.25	08
8.7	9.5	2.5	11
11	11.5	3	16

T-VSC10			
Controlled Q (l/min)		∅X	Reference
Min.	Max.	(mm)	
1.4	3.6	1.25	01
2	4.7	1.5	02
3.5	6.2	2	03
4.3	7	2.25	04
5.2	8.5	2.5	06
7.5	10.5	3	08
10	13.5	3.5	11
13	18	4	16

Valve type	C	Controlled flow (l/min)	Ch	M (∅)	Q	D	E	F	H	I (∅)	Weight (Kg)
T-VSC04	1/4" BSP	0,8 ÷ 11.5	19	10,5	3	12	11,5	26,5	4	7	0,013
T-VSC10	3/8" BSP	1.4 ÷ 18	22	14	4	9,5	14,5	28	5	8	0,023