



SH.03...

SH.03... SHUTTLE TYPE CARTRIDGE VALVES



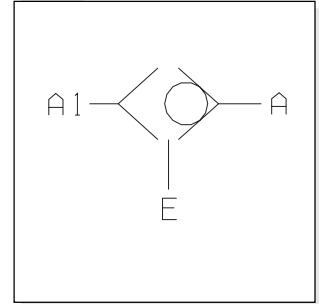
Shuttle type cartridge valves SH03... allow taking of the highest pressure signal to the external port via displacement of ball. There are usually employed to signal the actuator load to a load sensing pump pressure compensator.

Max. operating pressure	320 bar
Max. flow	5 l/min
Hydraulic fluids	Mineral oils DIN 51524
Fluid viscosity	10 ÷ 500 mm ² /s
Fluid temperature	-25°C ÷ 75°C
Ambient temperature	-25°C ÷ 60°C
Max. contamination level	class 10 in accordance with NAS 1638 with filter $\beta_{25} \geq 75$
Weight	0,023 Kg
Tightening torque	18 ÷ 20 Nm (1.8 ÷ 2 Kgm)

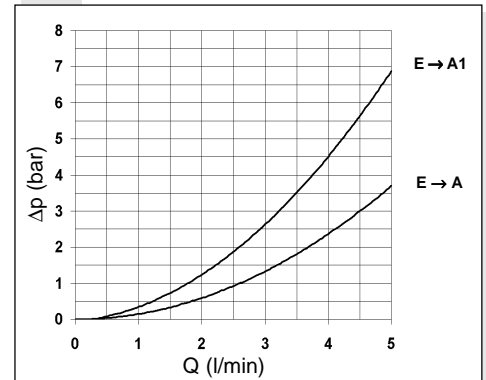
ORDERING CODE

- SH** Shuttle type cartridge valve
- 03** Size
- **** **00** = No variant
V1 = Viton
- 2** Serial No.

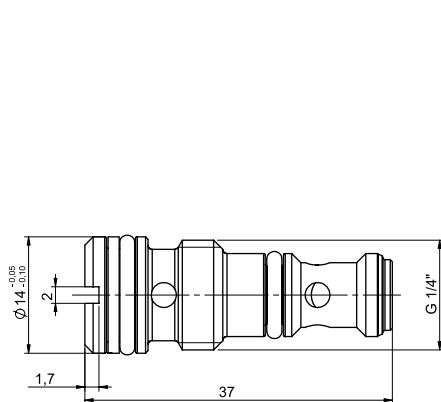
HYDRAULIC SYMBOL



PRESSURE DROPS



OVERALL DIMENSIONS



SEAT DIMENSION

