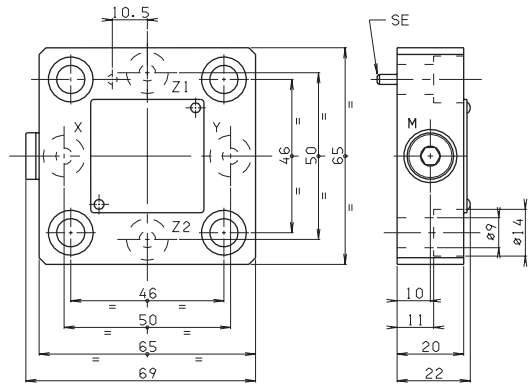
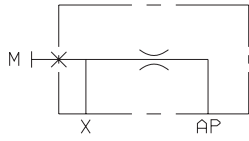
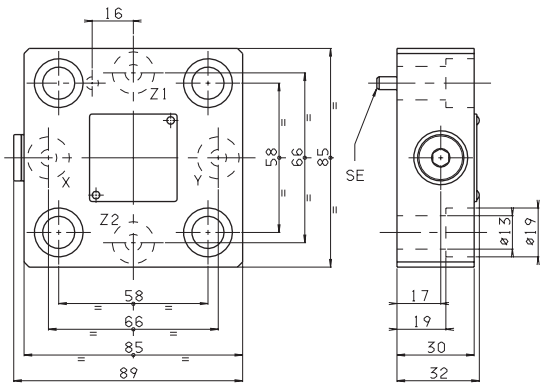
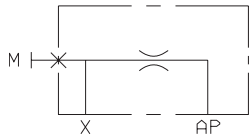


OVERALL DIMENSIONS KEC.16.RI... CHECK VALVE COVER



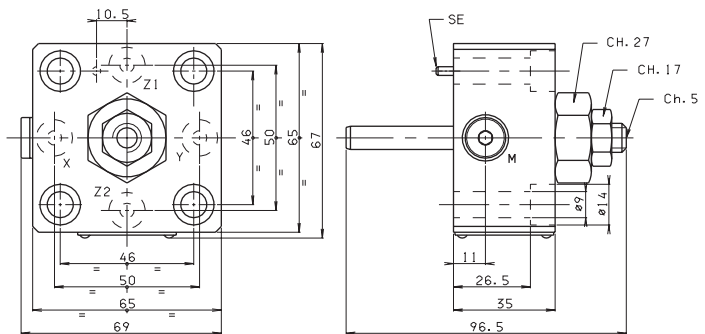
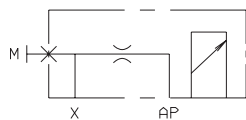
Weight: 0,5 Kg
M = pressure gauge attachment
 Orifice with calibrated $\varnothing 1$ mm standard diameter
 The covers are supplied with M8x25 UNI 5931
 fixing screws, reference pin SE $\varnothing 3 \times 12$ UNI 6873-71
 Tightening torque 19÷24 Nm/1.9÷2.4 Kgm with 8.8 screws

OVERALL DIMENSIONS KEC.25.RI... CHECK VALVE COVER



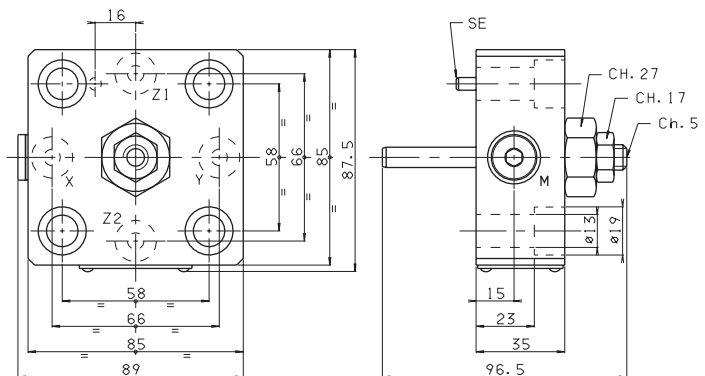
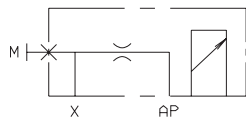
Weight: 1,3 Kg
M = pressure gauge attachment
 Orifice with calibrated $\varnothing 1$ mm standard diameter
 The covers are supplied with M12x35 UNI 5931
 fixing screws, reference pin SE $\varnothing 5 \times 12$ UNI 6873-71
 Tightening torque 69÷80 Nm/6.9÷8 Kgm with 8.8 screws

OVERALL DIMENSIONS KEC.16.CQ.. COVER WITH STROKE ADJUSTMENT



Weight: 0,9 Kg
M = pressure gauge attachment
 Orifice with calibrated $\varnothing 1$ mm standard diameter
 The covers are supplied with M8x40 UNI 5931
 fixing screws, reference pin SE $\varnothing 3 \times 12$ UNI 6873-71
 Tightening torque 19÷24 Nm/1.9÷2.4 Kgm with 8.8 screws


OVERALL DIMENSIONS KEC.25.CQ.. COVER WITH STROKE ADJUSTMENT



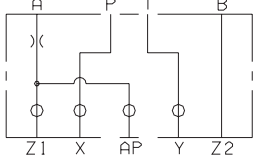
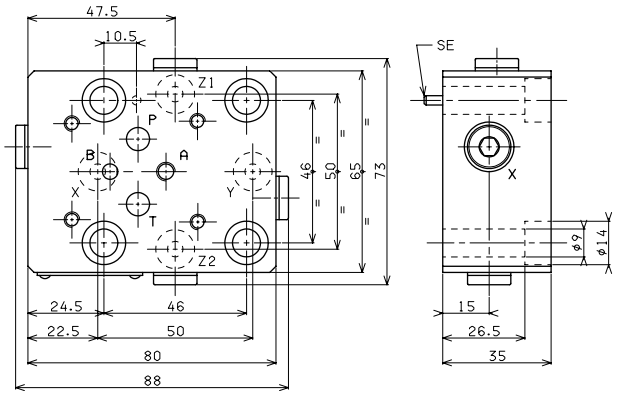
Weight: 1,6 Kg
M = pressure gauge attachment
 Orifice with calibrated $\varnothing 1$ mm standard diameter
 The covers are supplied with M12x40 UNI 5931
 fixing screws, reference pin SE $\varnothing 5 \times 12$ UNI 6873-71
 Tightening torque 69÷80 Nm/6.9÷8 Kgm with 8.8 screws

5


OVERALL DIMENSIONS KEC.16.RC... COVER WITH INTERFACE CETOP 3/NG6



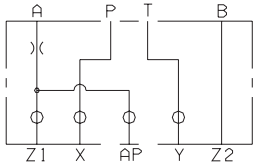
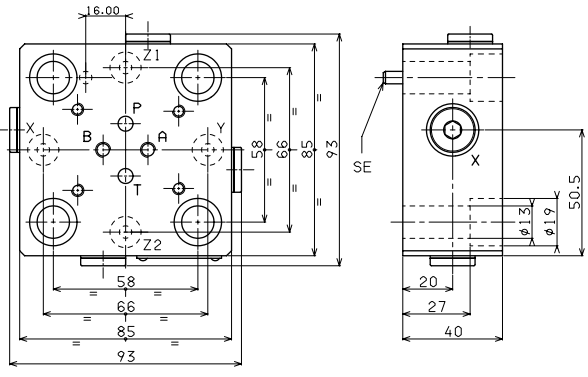
Weight: 1,2 Kg
M = pressure gauge attachment
 Orifice with calibrated $\varnothing 1$ mm standard diameter
 The covers are supplied with M8x40 UNI 5931 fixing screws, reference pin SE $\varnothing 3 \times 12$ UNI 6873-71
 tightening torque 19÷24 Nm/1.9÷2.4 Kgm with 8.8 screws


OVERALL DIMENSIONS KEC.25.RC... COVER WITH INTERFACE CETOP 3/NG6



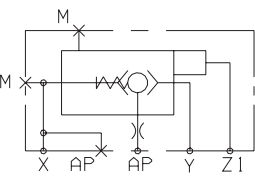
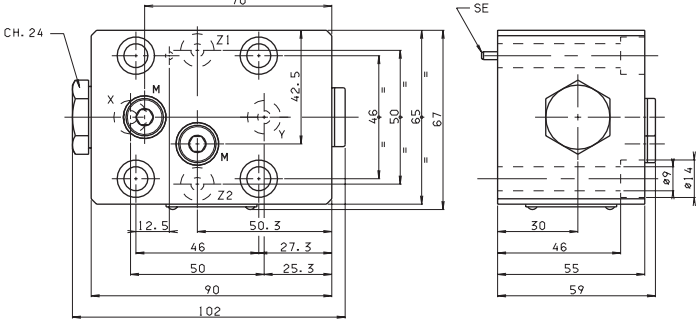
Weight: 1,8 Kg
M = pressure gauge attachment
 Orifice with calibrated $\varnothing 1$ mm standard diameter
 The covers are supplied with M12x45 UNI 5931 fixing screws, reference pin SE $\varnothing 5 \times 12$ UNI 6873-71
 tightening torque 69÷80 Nm/6.9÷8 Kgm with 8.8 screws


OVERALL DIMENSIONS KEC.16.PC... COVER WITH HYDRAULIC OUTLET PILOT VALVE



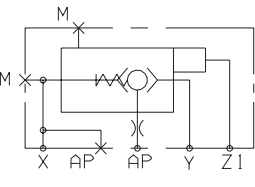
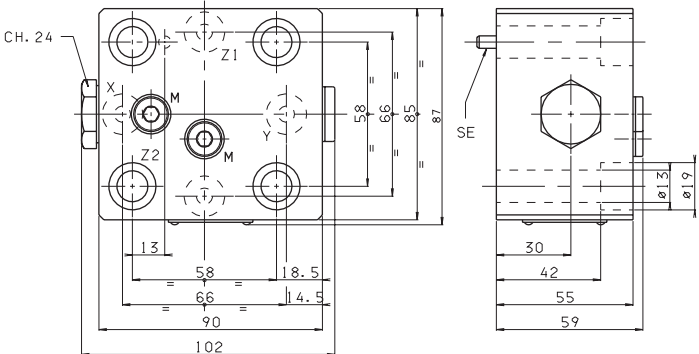
Weight: 2,1 Kg
M = pressure gauge attachment
 Orifice with calibrated $\varnothing 1$ mm standard diameter
 The covers are supplied with M8x60 UNI 5931 fixing screws, reference pin SE $\varnothing 3 \times 12$ UNI 6873-71
 tightening torque 19÷24 Nm/1.9÷2.4 Kgm with 8.8 screws


OVERALL DIMENSIONS KEC.25.PC... COVER WITH HYDRAULIC OUTLET PILOT VALVE

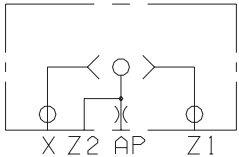


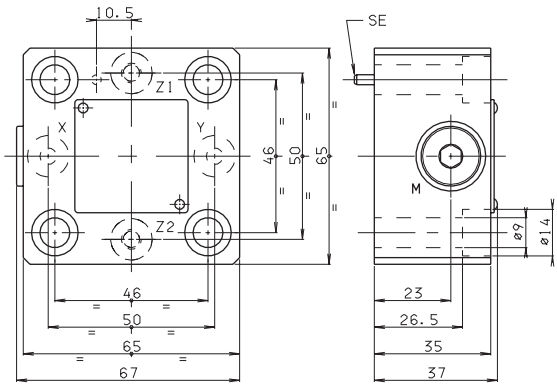
Weight: 2,7 Kg
M = pressure gauge attachment
 Orifice with calibrated $\varnothing 1$ mm standard diameter
 The covers are supplied with M12x60 UNI 5931 fixing screws, reference pin SE $\varnothing 5 \times 12$ UNI 6873-71
 tightening torque 69÷80 Nm/6.9÷8 Kgm with 8.8 screws

OVERALL DIMENSIONS **KEC.16.SH...** COVER WITH BUILT-IN EXCHANGE VALVE




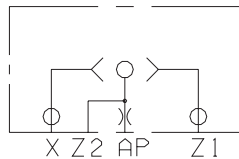


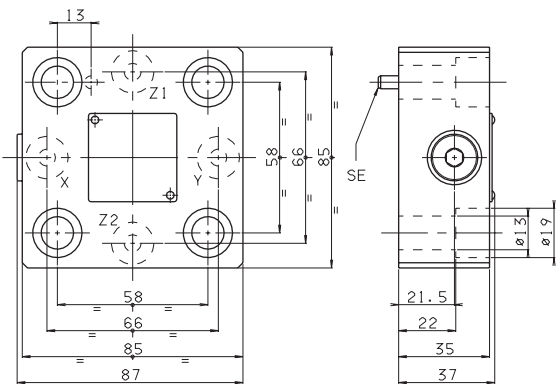


Weight: 0,9 Kg
M = pressure gauge attachment
 Orifice with calibrated $\varnothing 1$ mm standard diameter
 The covers are supplied with M8x40 UNI 5931 fixing screws, reference pin SE $\varnothing 3 \times 12$ UNI 6873-71
 tightening torque 19÷24 Nm/1.9÷2.4 Kgm with 8.8 screws

OVERALL DIMENSIONS **KEC.25.SH...** COVER WITH BUILT-IN EXCHANGE VALVE




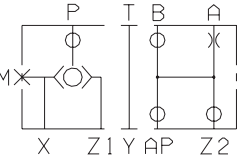


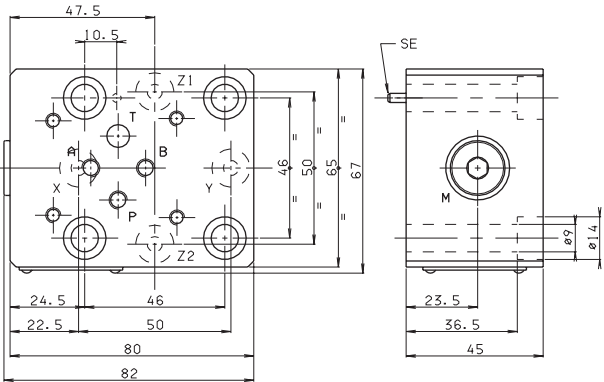


Weight: 1,5 Kg
M = pressure gauge attachment
 Orifice with calibrated $\varnothing 1$ mm standard diameter
 The covers are supplied with M12x40 UNI 5931 fixing screws, reference pin SE $\varnothing 5 \times 12$ UNI 6873-71
 tightening torque 69÷80 Nm/6.9÷8 Kgm with 8.8 screws

OVERALL DIMENSIONS **KEC.16.SP** COVER WITH BUILT-IN EXCHANGE VALVE AND INTERFACE **CETOP 3/NG6**




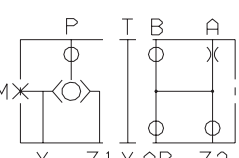


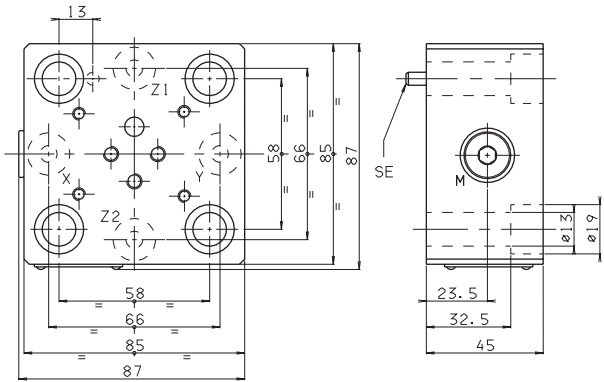


Weight: 1,4 Kg
M = pressure gauge attachment
 Orifice with calibrated $\varnothing 1$ mm standard diameter
 The covers are supplied with M8x50 UNI 5931 fixing screws, reference pin SE $\varnothing 3 \times 12$ UNI 6873-71
 tightening torque 19÷24 Nm/1.9÷2.4 Kgm with 8.8 screws

OVERALL DIMENSIONS **KEC.25.SP** COVER WITH BUILT-IN EXCHANGE VALVE AND INTERFACE **CETOP 3/NG6**







Weight: 2 Kg
M = pressure gauge attachment
 Orifice with calibrated $\varnothing 1$ mm standard diameter
 The covers are supplied with M12x50 UNI 5931 fixing screws, reference pin SE $\varnothing 5 \times 12$ UNI 6873-71
 tightening torque 69÷80 Nm/6.9÷8 Kgm with 8.8 screws

5