

CVR.20... CARTRIDGE PRESSURE REDUCING VALVES WITH RELIEVING



CVR.20...

These pressure reducing valves ensure a minimum pressure variation with changing flow rate up to 90 l/min.

Three spring types allow adjustment within the range 7 ÷ 250 bar. Manual adjustment is available by a grub screw or plastic knob.

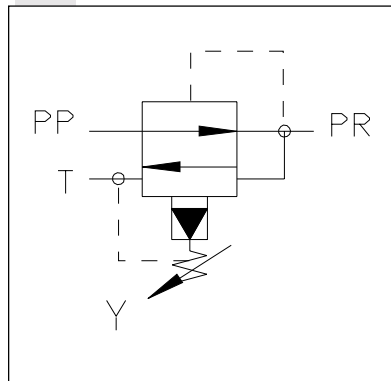
The RELIEVING SYSTEM inside the valve CVR allows the passage from PR to T line of the flow through the valve to avoid the increasing of pressure in the reduced-pressure line by diverting exceeding flow to reservoir.

Max. operating pressure	320 bar
Setting ranges:	Spring 1 max. 60 bar
	Spring 2 max. 120 bar
	Spring 3 max. 250 bar
Maximum allowed Δp pressure between the inlet and outlet pressure	150 bar
Max. flow	90 l/min
Draining on port T	0,5 ÷ 0,7 l/min
Hydraulic fluids	Mineral oils DIN 51524
Fluid viscosity	10 ÷ 500 mm ² /s
Fluid temperature	-25°C ÷ 75°C
Ambient temperature	-25°C ÷ 60°C
Max. contamination level	class 10 in accordance with NAS 1638 with filter $\beta_{25} \geq 75$
Weight	0,25 Kg
Tightening torque	30 ÷ 40 Nm (3 ÷ 4 Kgm)

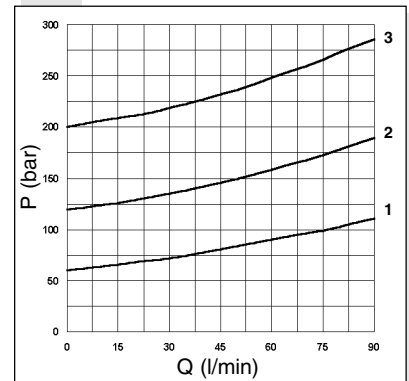
ORDERING CODE

CVR	Cartridge pressure reducing valve with relieving
20	Size
*	Adjustment: M = Plastic knob C = Grub screw
*	Setting ranges 1 = max. 60 bar (white spring) 2 = max. 120 bar (yellow spring) 3 = max. 250 bar (green spring)
**	00 = No variant V1 = Viton
1	Serial No

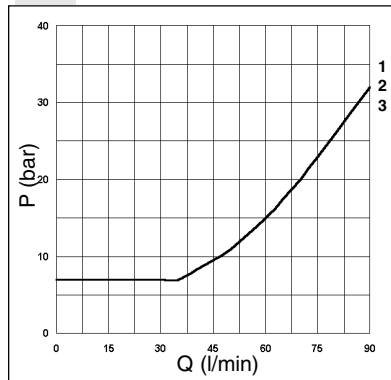
HYDRAULIC SYMBOL



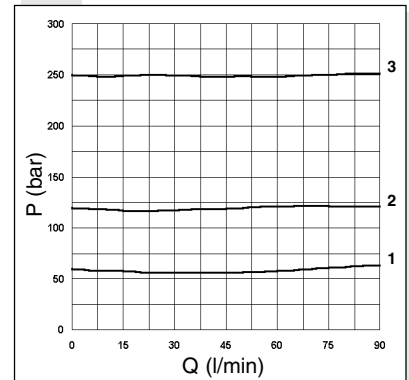
PRESSURE-FLOW OF RELIEVING



MINIMUM SETTING PRESSURE



PRESSURE-FLOW RATE



Curves n° 1 - 2 - 3 = setting ranges

The fluid used is a mineral oil with a viscosity of 46 mm²/s at 40°C. The tests have been carried out at a fluid temperature of 50°C.

OVERALL DIMENSIONS

