

CMP.30... PILOT OPERATED MAXIMUM PRESSURE VALVES



CMP.30...

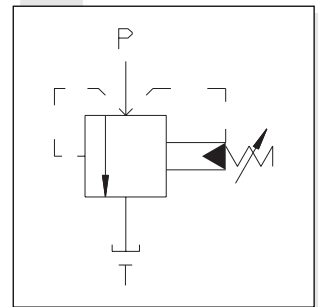
These piloted action valves offer an important operational safety feature for the systems in which they are installed: impossibility for the user to set pressure values higher than those specified in the catalogue by means of a mechanical stop (it is impossible to compress the spring completely).

Max. operating pressure	350 bar
Setting ranges	Spring 1 max. 50 bar Spring 2 max. 140 bar Spring 3 max. 350 bar
Max. flow	100 l/min
Hydraulic fluids	Mineral oils DIN 51524
Fluid viscosity	10 ÷ 500 mm ² /s
Fluid temperature	-25°C ÷ 75°C
Ambient temperature	-25°C ÷ 60°C
Max. contamination level	class 10 in accordance with NAS 1638 with filter β ₂₅ ≥ 75
Weight	0,18 Kg
Tightening torque	30 ÷ 40 Nm (3 ÷ 4 Kg)
• The minimum permissible setting pressure is the same for all springs: see curve below	

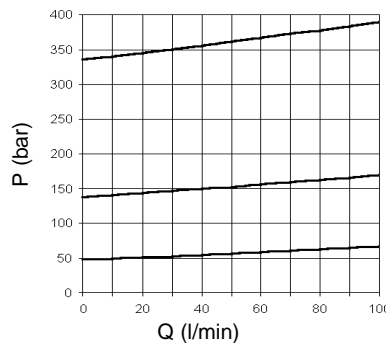
ORDERING CODE

CMP	Max. pressure cartridge
30	Size
*	Type of adjustment M = Plastic knob C = Grub screw V = Handwheel
*	Setting ranges 1 = max. 50 bar (white spring) 2 = max. 140 bar (yellow spring) 3 = max. 350 bar (green spring)
**	00 = No variant V1 = Viton
1	Serial No.

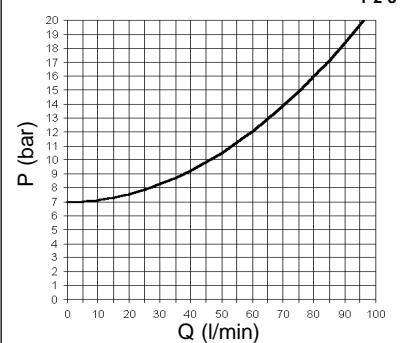
HYDRAULIC SYMBOL



PRESSURE - FLOW



MINIMUM SETTING PRESSURE



OVERALL DIMENSIONS

Type of adjustment

M Plastic knob

C Grub screw

V Handwheel

SEAT DIMENSIONS

CH. 27

CH. 36

R Seat reduction casing code from CPP100 to CMP30 **V29.52.0100**
Valve seat plug code **R78.40.0A17**