

CMP.10... DIRECT OPERATION MAXIMUM PRESSURE VALVES



CMP.10...

These direct action valves offer 2 important operational safety features for the system in which they are used:

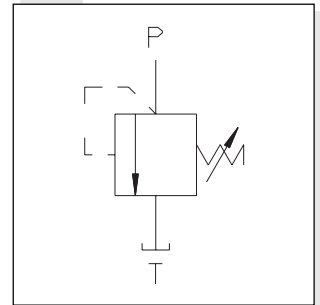
- 1) impossibility for the user to set pressure values higher than those specified in the catalogue by means of a mechanical stop (it is impossible to compress the spring completely)
- 2) Another internal mechanical stop prevents temporary closing of the P line because of peaks of pressure.

Max. operating pressure	320 bar	
Setting ranges:	Spring 1	max. 50 bar
	Spring 2	max. 150 bar
	Spring 3	max. 320 bar
Max. flow	40 l/min	
Hydraulic fluids	Mineral oils DIN 51524	
Fluid viscosity	10 ÷ 500 mm ² /s	
Fluid temperature	-25°C ÷ 75°C	
Ambient temperature	-25°C ÷ 60°C	
Max. contamination level	class 10 in accordance with NAS 1638 with filter $\beta_{25} \geq 75$	
Weight	0,2 Kg	
Tightening torque	60 ÷ 70 Nm (6 ÷ 7 Kgm)	
• The minimum permissible setting pressure depending on the screw: see curves below		

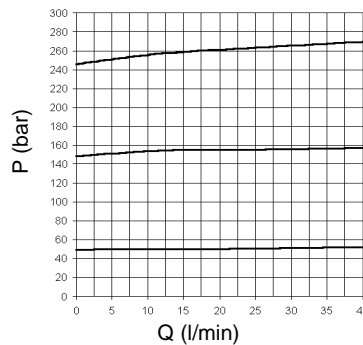
ORDERING CODE

CMP	Max. pressure cartridge
10	Size
*	Type of adjustment M = Plastic knob C = Grub screw V = Handwheel
*	Setting ranges 1 = max. 50 bar (white spring) 2 = max. 150 bar (yellow spring) 3 = max. 320 bar (green spring)
**	00 = No variant V1 = Viton
2	Serial No.

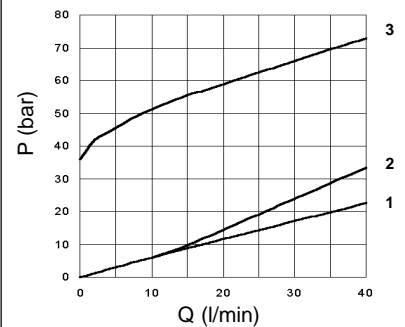
HYDRAULIC SYMBOL



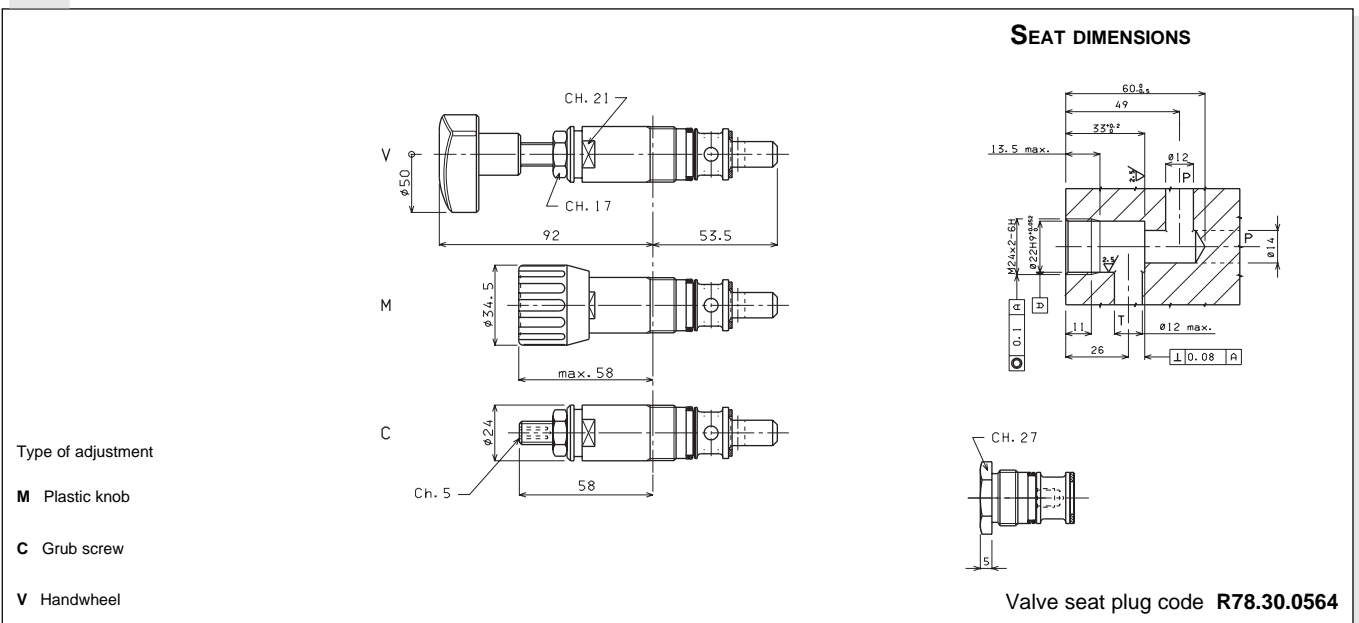
PRESSURE - FLOW



MINIMUM SETTING PRESSURE



OVERALL DIMENSIONS



Type of adjustment

M Plastic knob

C Grub screw

V Handwheel