

# CMP.02... DIRECT OPERATION MAXIMUM PRESSURE VALVES



CMP.02...

These direct action valves offer 2 important operational safety features for system in which they are used:

- 1) impossibility for the user to set pressure values higher than those specified in the catalogue by means a mechanical stop (it can only be done with the standard screw and nut);
- 2) Another internal mechanical stop prevents temporary closing of the P line because of peacks of pressure.

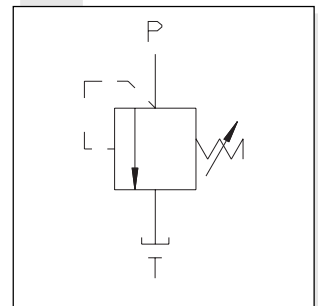
Max. operating pressure	250 bar
Setting range:	Spring 1 max. 30 bar
	Spring 2 max. 90 bar
	Spring 3 max. 180 bar
	Spring 4 max. 250 bar
Max. flow	20 l/min
Hydraulic fluids	Mineral oils DIN 51524
Fluid viscosity	10 ÷ 500 mm <sup>2</sup> /s
Fluid temperature	-25°C ÷ 75°C
Ambient temperature	-25°C ÷ 60°C
Max. contamination level	class 10 in accordance with NAS 1638, with filter $\beta_{25} \geq 75$
Weight	0,1 Kg
Tightening torque	13 ÷ 18 Nm (1.3 ÷ 1.8 Kgm)

• The minimum permissible setting pressure depending on the spring: see curves below

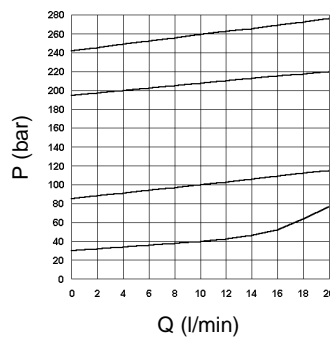
## ORDERING CODE

<b>CMP</b>	Max. pressure cartridge
<b>02</b>	Size
<b>C</b>	Type of adjustment Grub screw
<b>*</b>	Setting ranges 1 = max.30 bar ( <b>white spring</b> ) 2 = max.90 bar ( <b>yellow spring</b> ) 3 = max.180 bar ( <b>green spring</b> ) 4 = max.250 bar ( <b>orange spring</b> )
<b>**</b>	00 = No variant V1 = Viton
<b>1</b>	Serial No.

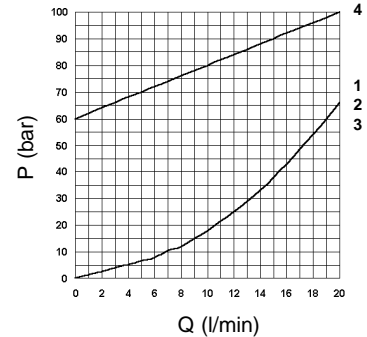
## HYDRAULIC SYMBOL



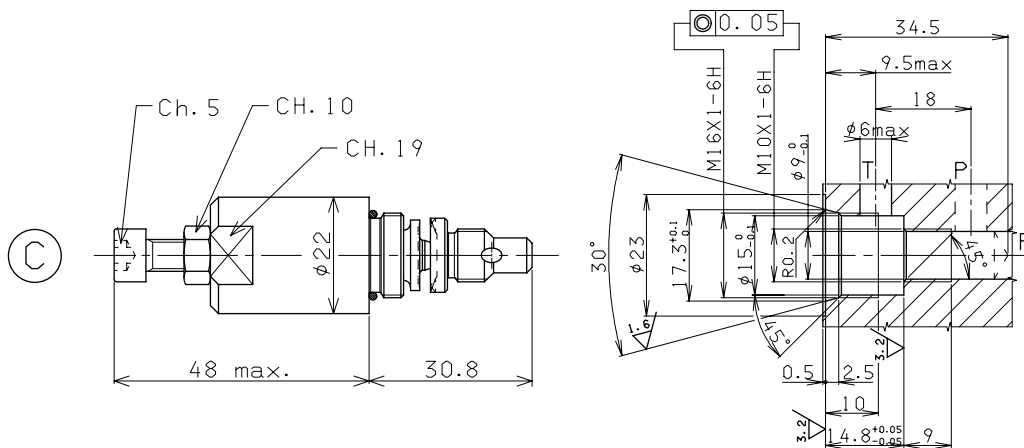
## PRESSURE - FLOW



## MINIMUM SETTING PRESSURE



## OVERALL DIMENSIONS



Type of adjustment

C Grub screw

## SEAT DIMENSIONS