

C3V.03... CARTRIDGE SOLENOID VALVES

3 WAY 2 POSITIONS



Max. pressure	250 bar
Max. flow	20 l/min
Max. excitation frequency	2 Hz
Duty cycle	100% ED
Hydraulic fluids	Mineral oils DIN 51524
Fluid viscosity	10 ÷ 500 mm ² /s
Fluid temperature	-25°C ÷ 75°C
Ambient temperature	-25°C ÷ 60°C
Max. contamination level	class 10 in accordance with NAS 1638 with filter β ₂₅ ≥ 75
Type of protection (in relation to the connector used)	IP 65
Weight (with coil)	0,37 Kg
Cartridge tightening torque	45 ÷ 50 Nm / 4.5 ÷ 5 Kgm
Coil ring nut tightening torque	4.5 Nm (0.45 Kgm)

C3V.03...

A09 DC COIL CH. V PAGE 36
STANDARD CONNECTORS CH. I PAGE 21

TAB.1 - SPOOL SCHEME

CODE	HYDRAULIC SYMBOL
1D	
1E	

TAB.2 - A09 (27 W) COIL

DC VOLTAGES	
L	12V
M	24V
N	48V*
P	110V*
R	98V*
S	196V*
W	Without DC coils

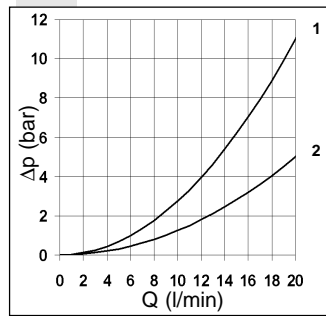
110Vac/50Hz
120Vac/60Hz with rectifier
220Vac/50Hz
240Vac/60Hz with rectifier

* Special voltages

ORDERING CODE

C3V	Cartridge 3 way / 2 positions
03	27W Coil
**	Schema (see Tab. 1)
E	Seat
*	Type of connection H = Predisp. Hirschmann A = AMP Junior solenoid F = Solenoid with flying leads (250 mm) I = Solenoid with flying leads (150 mm) and integrated diode
*	Voltage (see Tab. 2)
**	00 = No variant S1 = Without conn. Hirschmann R1 = Rectifier E1 = Emergency button P1 = Rotary emergency button
1	Serial No.

PRESSURE DROPS

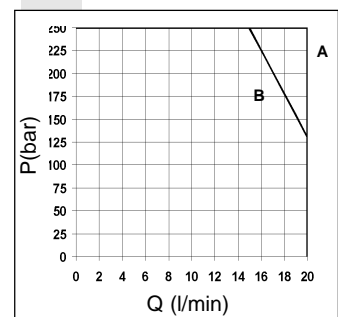


Spool type	Connections					
	2→1	2→3	1→2	1→3	3→1	3→2
1D	2	1	-	-	-	1
1E	2	-	2	1	1	-

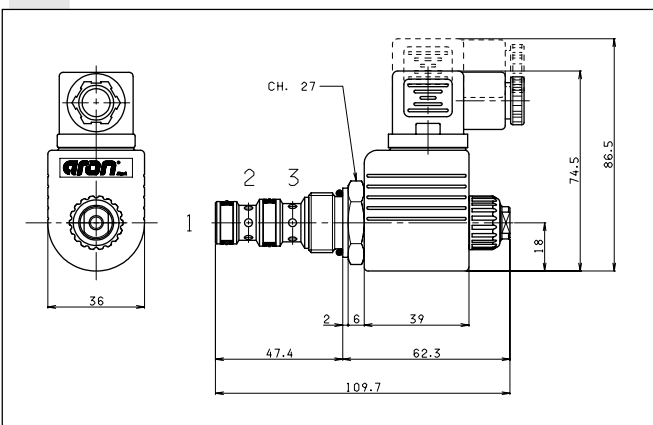
Curve No.

The tests were carried out with the solenoids at their working temperature, with a supply voltage 10% below nominal value and with a 40°C fluid temperature. The fluid used is a mineral oil with a viscosity of 46 mm²/s at 40°C.

LIMITS OF USE



OVERALL DIMENSIONS



VALVE SEAT

