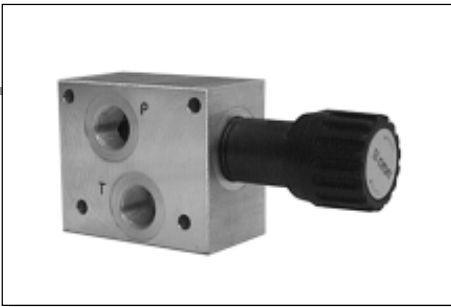


## FE10.3... INLET MODULE UNITS

WITH PRESSURE RELIEF VALVE (UP TO 30 l/min)



FE10.3...

Module units FE10.3... provide pressure relief valve with adjustable pressure setting ranges.

Manual adjustment is available by a grub screw or plastic knob. Maximum flow is 30 l/min.

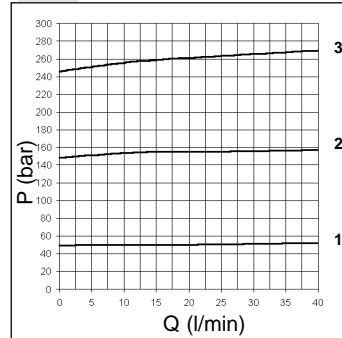
The threaded ports (P and T) are available in two different sizes: G3/8" or 9/16-18UNF.

Max. operating pressure	320 bar
Setting ranges:	spring 1 max. 50 bar
	spring 2 max. 150 bar
	spring 3 max. 320 bar
Max. flow	30 l/min
Hydraulic fluids	Mineral oils DIN 51524
Fluid viscosity	10 ÷ 500 mm <sup>2</sup> /s
Fluid temperature	-25°C ÷ 75°C
Ambient temperature	-25°C ÷ 60°C
Max. contamination level	class 10 in accordance with NAS 1638 with filter $\beta_{25} \geq 75$
Weight	0,4 Kg

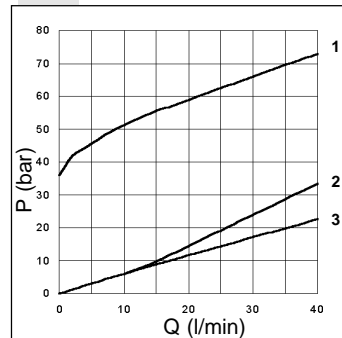
### ORDERING CODE

- FE10** Inlet module unit (up to 30 l/min) with pressure relief valve
- 3** Size
- \*** Port sizes:  
1 = G3/8"  
2 = 9/16-18UNF
- \*** Adjustment:  
**M** = Plastic knob  
**C** = Grub screw
- \*** Setting ranges  
1 = max. 50 bar (**white spring**)  
2 = max. 150 bar (**yellow spring**)  
3 = max. 320 bar (**orange spring**)
- \*\*** **00** = No variant  
**V1** = Viton
- 1** Serial No.

### PRESSURE - FLOW RATE



### MINIMUM SETTING PRESSURE



### OVERALL DIMENSIONS AND HYDRAULIC SYMBOL

