



FE.3...

FE.3... INLET MODULE UNITS

NO PRESSURE RELIEF VALVE



Module units FE.3... no pressure relief valve.

The threaded ports (P and T) are available in two different sizes: G3/8" or 9/16-18UNF.

Max. operating pressure	250 bar
Max. flow	30 l/min
Hydraulic fluids	Mineral oils DIN 51524
Fluid viscosity	10 ÷ 500 mm ² /s
Fluid temperature	-25°C ÷ 75°C
Ambient temperature	-25°C ÷ 60°C
Max. contamination level	class 10 in accordance with NAS 1638 with filter β ₂₅ ≥ 75
Weight	0,3 Kg

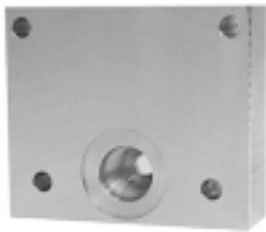
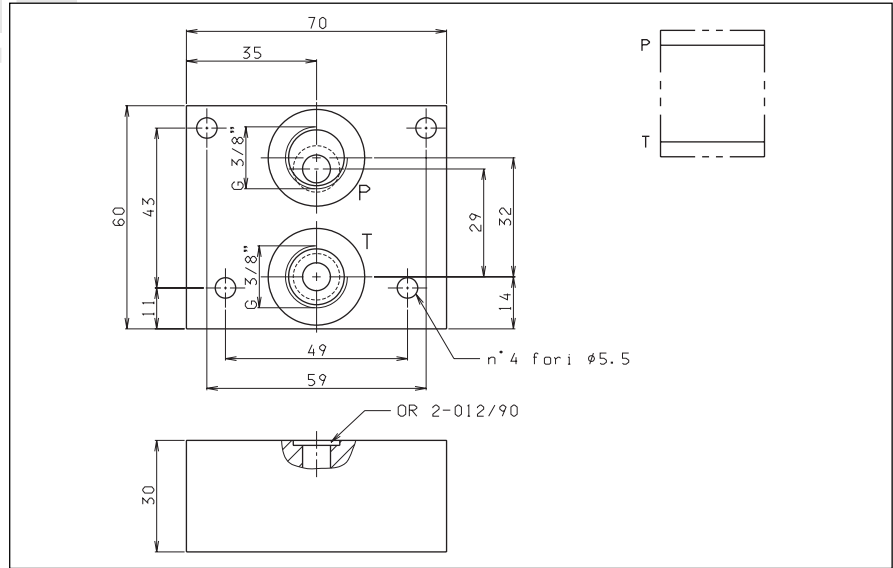
ORDERING CODE

- FE** Inlet module unit no pressure relief valve
- 3** Size
- *** Port sizes:
1 = G3/8"
2 = 9/16-18UNF
- **** 00 = No variant
V1 = Viton
- 1** Serial No.

01/2001/e

File: EFE3001

OVERALL DIMENSIONS AND HYDRAULIC SYMBOL



FU.3...

FU... OUTLET MODULE UNITS



The threaded port (T) is available in two different sizes: G3/8" or 9/16-18UNF.

Max. operating pressure	250 bar
Max. flow	30 l/min
Hydraulic fluids	Mineral oils DIN 51524
Fluid viscosity	10 ÷ 500 mm ² /s
Fluid temperature	-25°C ÷ 75°C
Ambient temperature	-25°C ÷ 60°C
Max. contamination level	class 10 in accordance with NAS 1638 with filter β ₂₅ ≥ 75
Weight	0,2 Kg

ORDERING CODE

- FU** Outlet module unit
- 3** Size
- *** Port sizes:
1 = G3/8"
2 = 9/16-18UNF
- **** 00 = No variant
- 1** Serial No.

OVERALL DIMENSIONS AND HYDRAULIC SYMBOL

