



## VMP.10 MAXIMUM / DIRECT PRESSURE VALVES IN LINE MOUNTING



The maximum pressure valves VMP10 are direct actions units.

Their use is essential for the limitation of hydraulic system pressure. In order to achieve more convenient calibration adjustment the whole pressure range (2÷320 bar) has been subdivided into 3 smaller bands, as shown in the ordering part number table. For each pressure band a different calibration spring is used, selected for the corresponding minimum operating pressure. The CMP10 cartridge is of direct acting type.

|                          |   |              |
|--------------------------|---|--------------|
| Max. pressure            | 320 bar   |              |
| Setting ranges:          | Spring 1  | max. 50 bar  |
|                          | Spring 2  | max. 150 bar |
|                          | Spring 3  | max. 320 bar |
| Max. flow                | 40 l/min  |              |
| Hydraulic fluids         | mineral oils DIN 51524  |              |
| Fluid viscosity          | 10 ÷ 500 mm <sup>2</sup> /s   |              |
| Fluid temperature        | -25°C ÷ 75°C  |              |
| Ambient temperature      | -25°C ÷ 60°C  |              |
| Max. contamination level | class 10 in accordance with NAS 1638 with filter $\beta_{25} \geq 75$ |              |
| Weight                   | 0,8 Kg  |              |

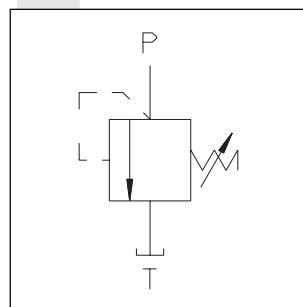
• The minimum permissible setting pressure depending on the spring: see curves below

VMP.10...  
CMP.10... CH. V PAGE 19

These direct action valves offer 2 important safety features for the systems where they are used:

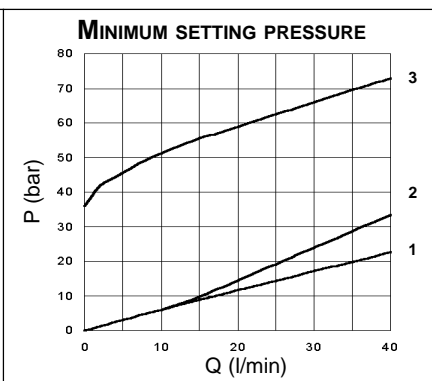
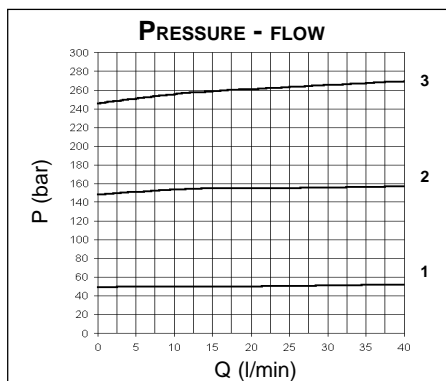
- 1) A mechanical end of stroke stop prevents the user from setting pressure value higher than those specified in the catalogue (it is impossible to compress the spring completely);
- 2) In order to prevent temporary closure of port P in case of high pressure peaks, the adjustment pin is mechanically blocked at a fixed opening value.

### HYDRAULIC SYMBOL



### ORDERING CODE

|            |   |
|------------|---|
| <b>VMP</b> | Max. pressure valve   |
| <b>10</b>  | Connector size: 3/8" BSP  |
| <b>*</b>   | Type of adjustment<br><b>M</b> = Steel knob<br><b>C</b> = Grub screw<br><b>V</b> = Handwheel  |
| <b>*</b>   | Setting ranges<br><b>1</b> = max. 50 bar ( <b>white spring</b> )<br><b>2</b> = max. 150 bar ( <b>yellow spring</b> )<br><b>3</b> = max. 320 bar ( <b>green spring</b> ) |
| <b>**</b>  | 00 = No variant<br>V1 = Viton   |
| <b>2</b>   | Serial No.  |



### OVERALL DIMENSIONS

