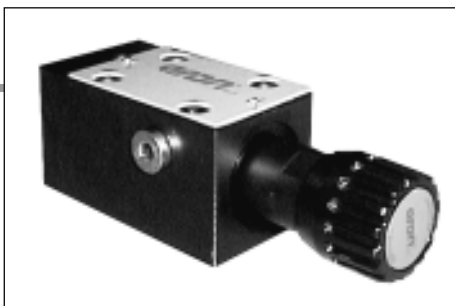


PV*.3 / PV*.U.3 PRESSURE REDUCING AND SEQUENCING VALVES CETOP 3/NG6



PVR.3 / PVS.3...

These subplate mounting piloted type pressure reducing and sequencing valves ensure a minimum variation in their calibrated pressure value with changing flow rate.

They are normally supplied with internal piloting and internal drainage on B, but they are already provided with a hole on the front cover to allow for external drainage.

They are available with two different types of adjustment and three calibrated ranges that cover pressure 7 ÷ 250 bar, with and without check valve.

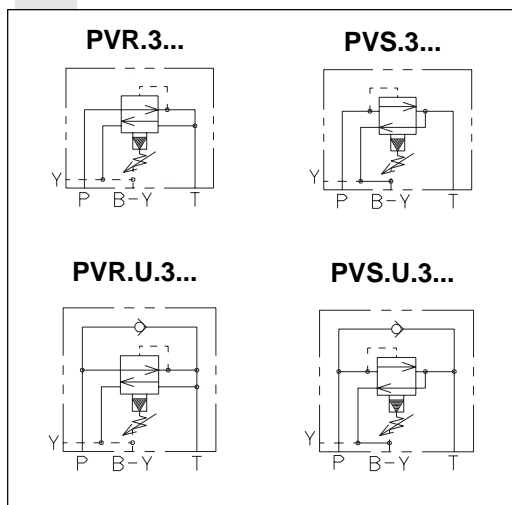
The adjustment is carried out by means of a grub screw or a metric plastic knob.

Max. pressure	320 bar
Setting ranges	Spring 1 max. 60 bar Spring 2 max. 120 bar Spring 3 max. 250 bar
Maximum allowed Δp pressure between the inlet and outlet pressure (PVR only)	150 bar
Max. flow	40 l/min
Draining on port T	0.5 ÷ 0.7 l/min
Hydraulic fluids	Mineral oils DIN 51524
Fluid viscosity	10 ÷ 500 mm ² /s
Fluid temperature	-25°C ÷ 75°C
Ambient temperature	-25°C ÷ 60°C
Max. contamination lever	class 10 in accordance with NAS 1638 with filter $\beta_{25} \geq 75$
Weight (without check valve)	1,5 Kg
Weight (with check valve)	2 Kg

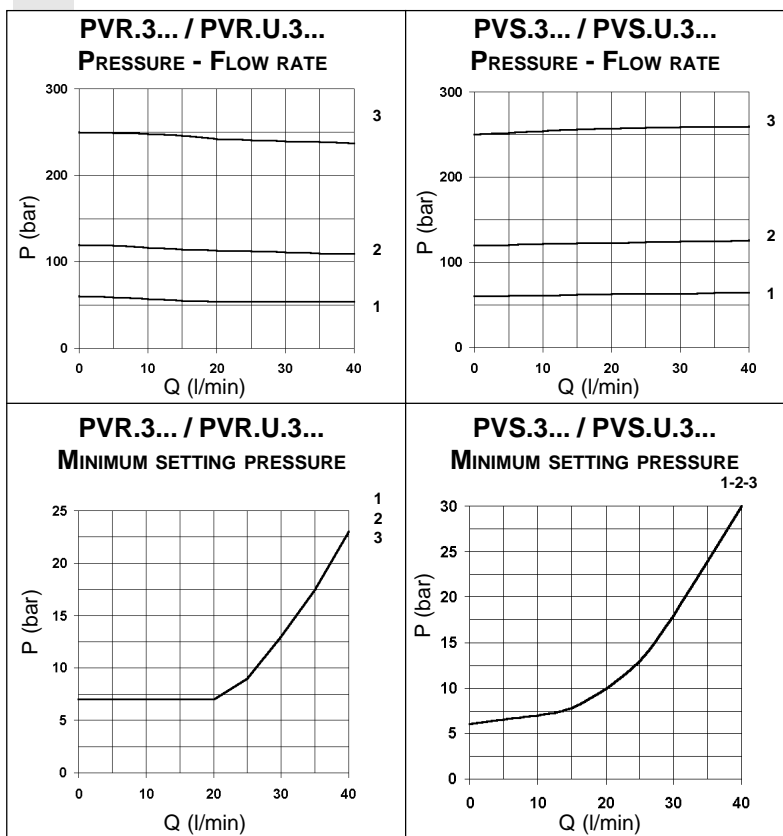
ORDERING CODE

- PV*** R = Reducing valve
S = Sequencing valve
- U** Check valve
(omit if not required)
- 3** CETOP 3/NG6
- *** Type of adjustment:
M = Plastic knob
C = Grub screw
- *** Setting ranges
1 = max. 60 bar (**white spring**)
2 = max. 120 bar (**yellow spring**)
3 = max. 250 bar (**green spring**)
- **** 00 = No variant
V1 = Viton
- 1** Serial No.

HYDRAULIC SYMBOLS



DIAGRAMS



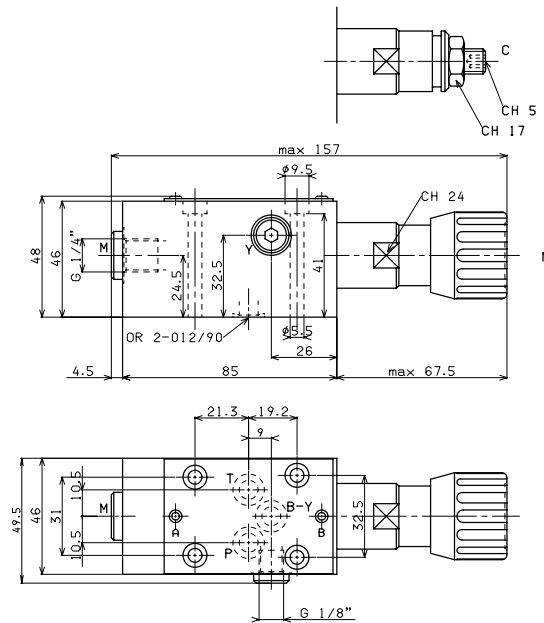
Curves n° 1 - 2 - 3 = setting ranges

The fluid used is a mineral oil with viscosity of 46 mm²/s at 40°C. The tests were carried out at a fluid temperature of 50°C.

OVERALL DIMENSIONS

REDUCING VALVE
PVR.3... CETOP 3/NG6

SEQUENCING VALVE
PVS.3... CETOP 3/NG6



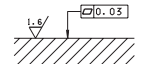
Type of adjustment

M Plastic knob

C Grub screw

Fixing screws UNI 5931 M5x50
with material specification 12.9
Tightening torque 5 Nm / 0.5 Kgm

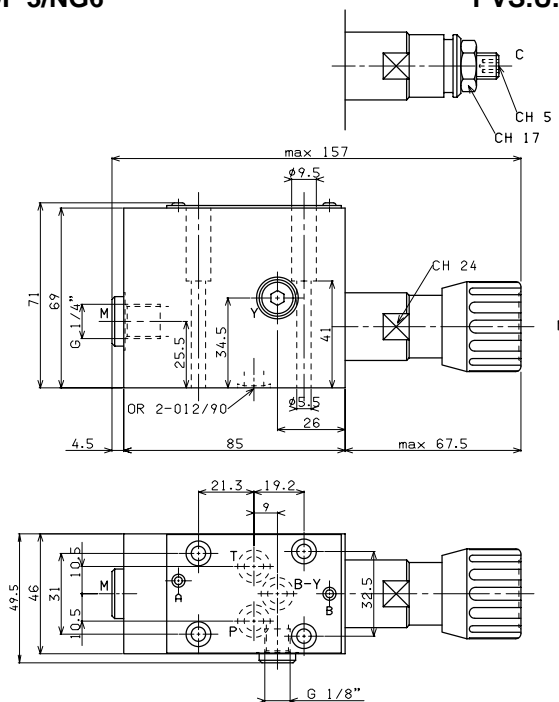
Support plane specifications



OVERALL DIMENSIONS

REDUCING VALVE WITH CHECK VALVE
PVR.U.3... CETOP 3/NG6

SEQUENCING VALVE WITH CHECK VALVE
PVS.U.3... CETOP 3/NG6



Type of adjustment

M Plastic knob

C Grub screw

Fixing screws UNI 5931 M5x50
with material specification 12.9
Tightening torque 5 Nm / 0.5 Kgm

Support plane specifications

